

My Account

[Login](#)
[Create Account](#)

Resources

[View All \(813\)](#)
[Adenoviruses \(137\)](#)
[Antibodies \(175\)](#)
[Bioimages \(67\)](#)
[Genomics Studies \(145\)](#)
[mESC Lines \(68\)](#)
[Mouse Strains \(120\)](#)
[Miscellaneous \(46\)](#)
[Protocols \(55\)](#)
[Research Data \(4\)](#)
[Resource Tags \(389\)](#)
[Visualization \(9\)](#)

Research & Cores

[Core Facilities \(5\)](#)
[Research Highlights \(5\)](#)
[Research Networks](#)
[Research Objectives](#)

Information

[About the BCBC](#)
[BCBC Events](#)
[Branding & Logos](#)
[Career Opportunities](#)
[Health](#)
[NIH hESC Registry](#)
[Policies & Guidelines](#)
[Member Publications](#)
[Research Programs](#)
[Research Investigators](#)
[Member Directory](#)
[Tutorials](#)

Monoclonal Human Disp2 raised in Mouse - Antibody RES965**Antibody Information**

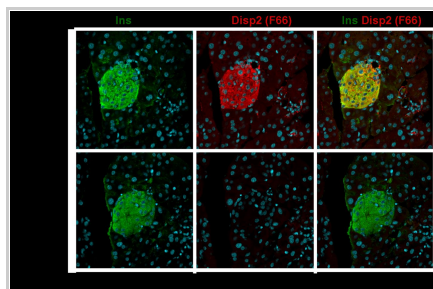
Antibody ID:	AB2537
Antigen:	Disp2 (NCBI Gene ID: 85455)
Type:	Monoclonal
Isotype:	IgG1
Immunogen Source:	Peptide
Raised In:	Mouse
Peptide:	aa 731-750 coupled to KLH
Source of Antigen:	Human
Cross Reacts With:	Mouse,Human
Affinity Purified:	Purified
Purity Details:	Protein A purified
Positive Control:	adult mouse pancreas
Notes:	Surface marker. Cell type: Mature endocrine cells - for details: http://www.betacell.org/research/highlights/MADBETA/

Applications and Uses

Application	Concentration	Storage Buffer	Protocols and Description
FACS	10 microgram/ml	PBS	Description: Cells are incubated 30 min (cold) with diluted antibody, washed two times, incubated 30 min (cold) with appropriate secondary reagent, washed and fixed with PFA followed by FACS analysis Protocols:
IHC	0.1 ug/ml	PBS	Description: adult mouse pancreas with TSA Protocols:

Associated Images

Image 1



Description:
Adult mouse pancreas with F66A4B1 (red) and insulin (green). In the lower row the F66A4B1 staining has been preabsorbed by incubation with the peptide used for immunization.


Reference:
Jacob Hald and Thomas Galbo, Hagedorn Research Institute

Image 2


Description:
Binding of F66A4B1 (red) to BetaTC6 cells compared to isotype control (IgG1).

Reference:
Anne Ejrnaes Sprinkel

Access Status

 This resource is publicly viewable.

Request this Resource


 Request from a repository

Primary contributor: [Antibody Core \(Retired\)](#)
Co-contributed by:

- [Antibody Core \(USA\)](#)

Resource Tags


AbCore, antibody, Disp2, Human, Monoclonal

 Login to edit tags

 Read more about tags

Resource History & Actions

Approved on
Last modified on Jan 20, 2012

 Login to edit or request an edit

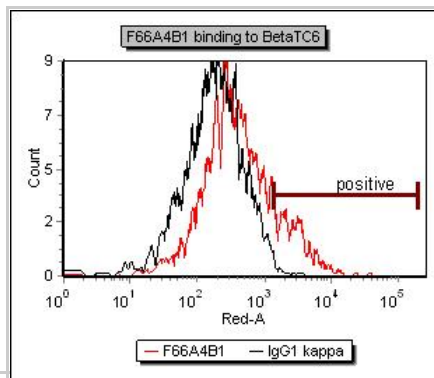
Related resources**BCBC**

No matching resources

Other Consortia

No matching resources

Data courtesy of [dkCOIN](#). Only public resources are displayed.



Repositories

BCBC members may [Login](#) to request this resource.

Contact Information

Preferred Contact


Name	Ole Madsen
Institution	Hagedorn Research Institute
Phone	+45 4443 9197
Email	odm@hagedorn.dk

Associated Publications

Publication	Citation
21947380	Hald J, Galbo T, Rescan C, Radzikowski L, Sprinkel AE, Heimberg H, Ahnfelt-Rønne J, Jensen J, Scharfmann R, Gradwohl G, Kaestner KH, Stoeckert C, Jensen JN, Madsen OD Pancreatic islet and progenitor cell surface markers with cell sorting potential . (2012) <i>Diabetologia</i> 55 : 154-65 (Added December 19, 2012)

Comments

There are no comments for this entry.

 [Login to add comments](#)

[Home](#) · [Your Account](#) · [News & Events](#) · [Resources](#) · [Policies & Guidelines](#) · [About Us](#) · [FAQ](#) · [Site Map](#)

© 2002-2015 Beta Cell Biology Consortium - All Rights Reserved. [Terms of usage and disclaimer](#).

