

**My Account**

[Login](#)  
[Create Account](#)

**Resources**

[View All \(813\)](#)  
[Adenoviruses \(137\)](#)  
[Antibodies \(175\)](#)  
[Bioimages \(67\)](#)  
[Genomics Studies \(145\)](#)  
[mESC Lines \(68\)](#)  
[Mouse Strains \(120\)](#)  
[Miscellaneous \(46\)](#)  
[Protocols \(55\)](#)  
[Research Data \(4\)](#)  
[Resource Tags \(389\)](#)  
[Visualization \(9\)](#)

**Research & Cores**

[Core Facilities \(5\)](#)  
[Research Highlights \(5\)](#)  
[Research Networks](#)  
[Research Objectives](#)

**Information**

[About the BCBC](#)  
[BCBC Events](#)  
[Branding & Logos](#)  
[Career Opportunities](#)  
[Health](#)  
[NIH hESC Registry](#)  
[Policies & Guidelines](#)  
[Member Publications](#)  
[Research Programs](#)  
[Research Investigators](#)  
[Member Directory](#)  
[Tutorials](#)

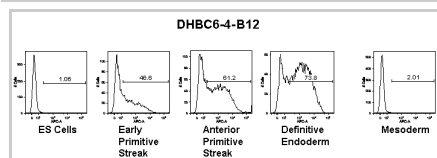
## Monoclonal Human Hu ES-Derived Early Endoderm raised in Mouse - Antibody RES922

**Antibody Information**

<b>Antibody ID:</b>	AB2494
<b>Antigen:</b>	Hu ES-Derived Early Endoderm <i>(No Gene ID associated)</i>
<b>Type:</b>	Monoclonal
<b>Isotype:</b>	Heavy-Unknown
<b>Immunogen Source:</b>	Cells
<b>Raised In:</b>	Mouse
<b>Peptide:</b>	<i>Not provided</i>
<b>Source of Antigen:</b>	Human
<b>Cross Reacts With:</b>	Human
<b>Affinity Purified:</b>	Supernatant
<b>Purity Details:</b>	<i>Not provided</i>
<b>Positive Control:</b>	Human ES-Derived Early Endoderm
<b>Notes:</b>	The following is a preliminary discussion of the specificity of the reported antibody. This antibody was raised against day 6 early endoderm generated from human ES cells. This antibody has been found to selectively react with a cell surface molecule on human ES-derived cultures enriched for anterior primitive streak and definitive endoderm, and to a much lesser extent on ES cells, early primitive endoderm, and mesoderm.

**Applications and Uses**

Application	Concentration	Storage Buffer	Protocols and Description
FACS	Undiluted	As provided	Description: This antibody reacts with a cell surface molecule on a subset of cells from ES-derived culture enriched for anterior primitive streak and definitive endoderm. Cells expressing the molecule can be detected by FACS. Protocols:

**Associated Images****Image 1****Description:**

This figure illustrates staining of a subset of cells in human ES-derived cultures enriched for anterior primitive streak and definitive endoderm. Cells were incubated with the monoclonal antibody, washed, then incubated with an allophycocyanin-conjugated anti-mouse-Ig.

**Reference:**


*Not provided*

**Repositories****Streeter Lab**

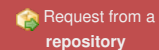


**Stock #:** *Not provided*  
**Availability Notes:** *Not provided*

**Access Status**

 This resource is publicly viewable.

**Request this Resource**



Primary contributor: [Grompe Lab](#)


Co-contributed by:

- [Streeter Lab](#)
- [Keller Lab](#)

**Resource Tags**


antibody, Hu ES-Derived Early Endoderm, Human, Monoclonal





**Resource History & Actions**

Approved on  
 Last modified on Feb 10, 2009



**Related resources****BCBC**

*No matching resources*

**Other Consortia**

*No matching resources*

Data courtesy of [dkCOIN](#). Only public resources are displayed.

## Contact Information

### Preferred Contact

Name	Philip Streeter
Institution	Oregon Health & Science University
Phone	503-494-1762
Email	<a href="mailto:streetep@ohsu.edu">streetep@ohsu.edu</a>

## Associated Publications

*No publications associated*

## Comments

*There are no comments for this entry.*



[Home](#) · [Your Account](#) · [News & Events](#) · [Resources](#) · [Policies & Guidelines](#) · [About Us](#) · [FAQ](#) · [Site Map](#)

© 2002-2015 Beta Cell Biology Consortium - All Rights Reserved. [Terms of usage and disclaimer.](#)

