

My Account

[Login](#)
[Create Account](#)

Resources

[View All \(813\)](#)
[Adenoviruses \(137\)](#)
[Antibodies \(175\)](#)
[Bioimages \(67\)](#)
[Genomics Studies \(145\)](#)
[mESC Lines \(68\)](#)
[Mouse Strains \(120\)](#)
[Miscellaneous \(46\)](#)
[Protocols \(55\)](#)
[Research Data \(4\)](#)
[Resource Tags \(389\)](#)
[Visualization \(9\)](#)

Research & Cores

[Core Facilities \(5\)](#)
[Research Highlights \(5\)](#)
[Research Networks](#)
[Research Objectives](#)

Information

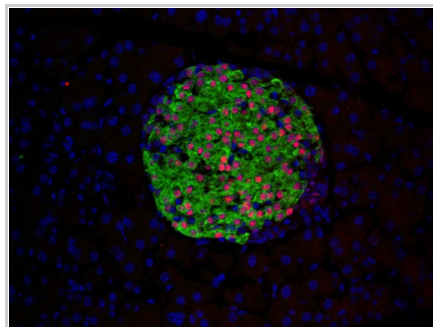
[About the BCBC](#)
[BCBC Events](#)
[Branding & Logos](#)
[Career Opportunities](#)
[Health](#)
[NIH hESC Registry](#)
[Policies & Guidelines](#)
[Member Publications](#)
[Research Programs](#)
[Research Investigators](#)
[Member Directory](#)
[Tutorials](#)

Polyclonal Mouse PDX1 raised in Chicken - Antibody RES4553**Antibody Information**

Antibody ID:	AB3934
Antigen:	PDX1 (NCBI Gene ID: 102851)
Type:	Polyclonal
Isotype:	Not Applicable
Immunogen Source:	Fusion Protein
Raised In:	Chicken
Peptide:	<i>Not provided</i>
Source of Antigen:	Mouse
Cross Reacts With:	Mouse, Human
Affinity Purified:	Affinity Purified
Purity Details:	<i>Not provided</i>
Positive Control:	<i>Not provided</i>
Notes:	It is critical to know that this antibody is IgY.

Applications and Uses

Application	Concentration	Storage Buffer	Protocols and Description
IHC	1:1000	PBS, 5% fetal calf serum, 5% glycerol	Description: Recommended IF dilution is 1:1000. Protocols:

Associated Images**Image 1****Description:**

Pdx1 (red) insulin (green) DAPI (blue) IF/Adult mouse pancreas cryosections 1:100

Reference:

Not provided

Repositories**Wright Lab**

Request this resource	Stock #: <i>Not provided</i> Availability Notes: <i>Not provided</i>
---------------------------------------	---


Contact Information**Preferred Contact**

Name	Michael Ray
Institution	Vanderbilt University
Phone	(615)343-8258
Email	michael.ray@vanderbilt.edu

Primary Lab Contact

Name	Chris Wright
-------------	--------------

Access Status

 This resource is publicly viewable.

Request this Resource

[Request from a repository](#)

Primary contributor: [Wright Lab](#)

Resource Tags

antibody, Mouse, PDX1, Polyclonal

[Login to edit tags](#)

[Read more about tags](#)

Resource History & Actions

Approved on
Last modified on Oct 17, 2012

[Login to edit or request an edit](#)

Related resources**BCBC**

No matching resources

Other Consortia

No matching resources

Data courtesy of [dkCOIN](#). Only public resources are displayed.

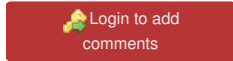
Institution	Vanderbilt University
Phone	615-343-8256
Email	chris.wright@vanderbilt.edu

Associated Publications

No publications associated

Comments

There are no comments for this entry.



[Home](#) · [Your Account](#) · [News & Events](#) · [Resources](#) · [Policies & Guidelines](#) · [About Us](#) · [FAQ](#) · [Site Map](#)

© 2002-2015 Beta Cell Biology Consortium - All Rights Reserved. [Terms of usage and disclaimer.](#)

