

My Account

Login
Create Account

Resources

View All (813)
Adenoviruses (137)
Antibodies (175)
Bioimages (67)
Genomics Studies (145)
mESC Lines (68)
Mouse Strains (120)
Miscellaneous (46)
Protocols (55)
Research Data (4)
Resource Tags (389)
Visualization (9)

Research & Cores

Core Facilities (5)
Research Highlights (5)
Research Networks
Research Objectives

Information

About the BCBC
BCBC Events
Branding & Logos
Career Opportunities
Health
NIH hESC Registry
Policies & Guidelines
Member Publications
Research Programs
Research Investigators
Member Directory
Tutorials

Polyclonal Mouse Ptf1a raised in Rabbit - Antibody RES335**Antibody Information**

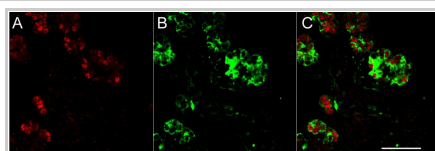
Antibody ID:	AB2153
Antigen:	Ptf1a (NCBI Gene ID: 19213)
Type:	Polyclonal
Isotype:	Not Applicable
Immunogen Source:	Fusion Protein
Raised In:	Rabbit
Peptide:	GST-Ptf1a (aa11-237)
Source of Antigen:	Mouse
Cross Reacts With:	Mouse, Human
Affinity Purified:	Serum
Purity Details:	<i>Not provided</i>
Positive Control:	mouse e15.5 pancreas
Notes:	<i>Not provided</i>

Applications and Uses

Application	Concentration	Storage Buffer	Protocols and Description
IHC	1:4000	<i>Not provided</i>	Description: Mouse e15.5 pancreas, 4% PFA O/N, 30% suc O/N, Ptf1a 1:4000 O/N Protocols:

Associated Images

Image 1



Description:
Mouse e15.5 pancreas, 4% PFA O/N, 30% suc O/N, Ptf1a (red) 1:4000 O/N + amlase (green) 1:300 (sheep, arics), DaR-cy3 + DaShe-cy5 (Jackson), 45 min, bar is 50 micrometer.

Reference:
Jacob Hald, Hagedorn
Research Institute

Repositories**Antibody Core (USA)**

 Request this resource

Stock #: 2432A
Availability Notes: *Not provided*


Antibody Core (Retired)

Out of stock **Stock #:** 2432A
Availability Notes: Available in 25 microliter aliquots

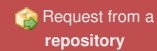
Contact Information**Preferred Contact**

Name	Michael Ray
Institution	Vanderbilt University
Phone	(615)343-8258
Email	michael.ray@vanderbilt.edu

Access Status

 This resource is publicly viewable.


Request this Resource


 Request from a repository

Primary contributor: [Antibody Core \(Retired\)](#)
Co-contributed by:
• [Antibody Core \(USA\)](#)

Resource Tags

AbCore, antibody, Mouse, p48 Ptf1a, Polyclonal, Ptf1a

 Login to edit tags

 Read more about tags

Resource History & Actions

Approved on
Last modified on Aug 29, 2007

 Login to edit or request an edit

Related resources**BCBC**

No matching resources

Other Consortia

No matching resources

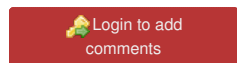
Data courtesy of [dkCOIN](#). Only public resources are displayed.

Associated Publications

Publication	Citation
22096075	Ahnfelt-Rønne J, Jørgensen MC, Klinck R, Jensen JN, Füchtbauer EM, Deering T, MacDonald RJ, Wright CV, Madsen OD, Serup P Ptf1a-mediated control of Dll1 reveals an alternative to the lateral inhibition mechanism. (2012) <i>Development</i> 139 : 33-45 (Added November 29, 2012)
18347078	Hald J, Sprinkel AE, Ray M, Serup P, Wright C, Madsen OD Generation and characterization of Ptf1a antiserum and localization of Ptf1a in relation to Nkx6.1 and Pdx1 during the earliest stages of mouse pancreas development. (2008) <i>J Histochem Cytochem</i> 56 : 587-95 (Added June 13, 2013)

Comments

There are no comments for this entry.



[Home](#) · [Your Account](#) · [News & Events](#) · [Resources](#) · [Policies & Guidelines](#) · [About Us](#) · [FAQ](#) · [Site Map](#)

© 2002-2015 Beta Cell Biology Consortium - All Rights Reserved. [Terms of usage and disclaimer.](#)

