

My Account

[Login](#)
[Create Account](#)

Resources

[View All \(813\)](#)
[Adenoviruses \(137\)](#)
[Antibodies \(175\)](#)
[Bioimages \(67\)](#)
[Genomics Studies \(145\)](#)
[mESC Lines \(68\)](#)
[Mouse Strains \(120\)](#)
[Miscellaneous \(46\)](#)
[Protocols \(55\)](#)
[Research Data \(4\)](#)
[Resource Tags \(389\)](#)
[Visualization \(9\)](#)

Research & Cores

[Core Facilities \(5\)](#)
[Research Highlights \(5\)](#)
[Research Networks](#)
[Research Objectives](#)

Information

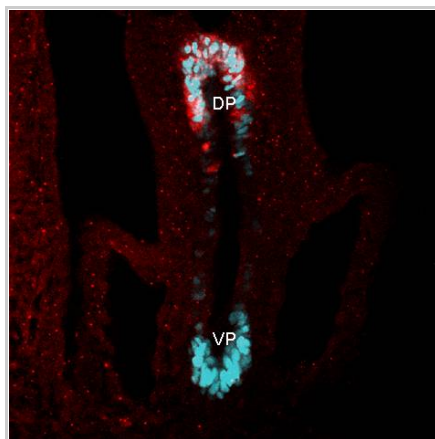
[About the BCBC](#)
[BCBC Events](#)
[Branding & Logos](#)
[Career Opportunities](#)
[Health](#)
[NIH hESC Registry](#)
[Policies & Guidelines](#)
[Member Publications](#)
[Research Programs](#)
[Research Investigators](#)
[Member Directory](#)
[Tutorials](#)

Polyclonal E. coli beta Galactosidase raised in Chicken - Antibody RES333**Antibody Information**

Antibody ID:	AB2134
Antigen:	beta Galactosidase (NCBI Gene ID: 945006)
Type:	Polyclonal
Isotype:	Not Applicable
Immunogen Source:	Purified Protein
Raised In:	Chicken
Peptide:	<i>Not provided</i>
Source of Antigen:	E. coli
Cross Reacts With:	Unknown
Affinity Purified:	Serum
Purity Details:	<i>Not provided</i>
Positive Control:	<i>Not provided</i>
Notes:	<i>Not provided</i>

Applications and Uses

Application	Concentration	Storage Buffer	Protocols and Description
IHC	1:2000	<i>Not provided</i>	Description: Wholmount immunofluorescence as described in Ahnfelt-Ronne et al., 2007, J Histochem and cytochem: 55(9): 925-930. Protocols:

Associated Images**Image 1**

Description:
e9.5 mouse embryo (Dl11+/tm1Gos) fixed o/n in 4% formaldehyde. Stained in wholmount for Pdx1, Ab2027 diluted 1:16000 (blue) and betagalactosidase 1:2000 (red). Image obtained as a confocal optical section from a thick vibratome section. DP: dorsal pancreas, VP: ventral pancreas

Reference:
Jonas Ahnfelt-Rønne, Hagedorn Research Institute

Repositories**AbCam**


[Request via www.abcam.com website](#)

Stock #: ab9361
Availability Notes: *Not provided*

Contact Information**Preferred Contact**

Name	abcam
Institution	<i>Not provided</i>
Phone	(888) 77-ABCAM (22226)

Access Status

 This resource is publicly viewable.

Request this Resource

[Request from a repository](#)

Primary contributor: [Antibody Core \(Retired\)](#)
 Co-contributed by:

- [Antibody Core \(USA\)](#)

Resource Tags

antibody, beta Galactosidase, E. coli, Polyclonal

[Login to edit tags](#)

[Read more about tags](#)

Resource History & Actions

Approved on
 Last modified on Apr 11, 2007

[Login to edit or request an edit](#)

Related resources**BCBC**

No matching resources

Other Consortia

No matching resources

Data courtesy of [dkCOIN](#). Only public resources are displayed.


Email us.orders@abcam.com

Associated Publications

No publications associated

Comments

There are no comments for this entry.

 [Login to add comments](#)

[Home](#) · [Your Account](#) · [News & Events](#) · [Resources](#) · [Policies & Guidelines](#) · [About Us](#) · [FAQ](#) · [Site Map](#)

© 2002-2015 Beta Cell Biology Consortium - All Rights Reserved. [Terms of usage and disclaimer.](#)

