

## My Account

Login  
Create Account

## Resources

View All (813)  
Adenoviruses (137)  
Antibodies (175)  
Bioimages (67)  
Genomics Studies (145)  
mESC Lines (68)  
Mouse Strains (120)  
Miscellaneous (46)  
Protocols (55)  
Research Data (4)  
Resource Tags (389)  
Visualization (9)

## Research &amp; Cores

Core Facilities (5)  
Research Highlights (5)  
Research Networks  
Research Objectives

## Information

About the BCBC  
BCBC Events  
Branding & Logos  
Career Opportunities  
Health  
NIH hESC Registry  
Policies & Guidelines  
Member Publications  
Research Programs  
Research Investigators  
Member Directory  
Tutorials

## Monoclonal Human Somatostatin raised in Mouse - Antibody RES296

### Antibody Information

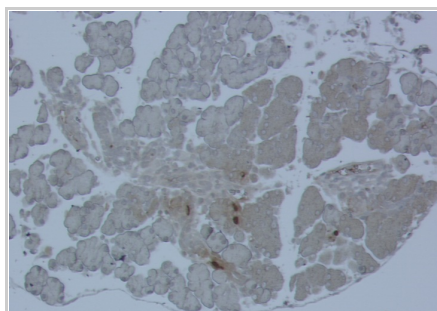
|                    |  |
|--------------------|--|
| Antibody ID:       | AB1985   |
| Antigen:           | Somatostatin (NCBI Gene ID: <a href="#">6750</a> ) |
| Type:              | Monoclonal   |
| Isotype:           | IgG1   |
| Immunogen Source:  | Peptide  |
| Raised In:         | Mouse  |
| Peptide:           | <i>Not provided</i>                                |
| Source of Antigen: | Human  |
| Cross Reacts With: | Mouse,Rat,Human                                    |
| Affinity Purified: | Affinity Purified                                  |
| Purity Details:    | <i>Not provided</i>                                |
| Positive Control:  | Adult pancreas tissue                              |
| Notes:             | Also works on several other species                |

### Applications and Uses

| Application | Concentration | Storage Buffer | Protocols and Description   |
|-------------|---------------|----------------|---|
| IHC-P       | 1:500         | PBS            | Description: <i>Not provided</i><br>Protocols:<br>1. <a href="#">Peroxidase</a>                 |
| IHC-Fr      | 1ug/ml        | PBS with azide | Description: <i>Not provided</i><br>Protocols:<br>1. <a href="#">Immunofluorescent Protocol</a> |
| IHC-P       | 1ug/ml        | PBS            | Description: <i>Not provided</i><br>Protocols:<br>1. <a href="#">Immunofluorescent Protocol</a> |

### Associated Images

## Image 1



**Description:**  
Somatostatin staining on E18 wild type mice. Magnification 10x.

**Reference:**  
Scott Heller

### Repositories

## Antibody Core (USA)


[Request this resource](#)

Stock #: SOM-018  
Availability Notes: *Not provided*

## Antibody Core (Retired)

*Out of stock* Stock #: SOM-018  
Availability Notes: Available in 100 ul aliquots

### Access Status

 This resource is publicly viewable.

### Request this Resource

[Request from a repository](#)

Primary contributor: [Antibody Core \(Retired\)](#)  
Co-contributed by:  
• [Antibody Core \(USA\)](#)

### Resource Tags

AbCore, antibody, Human, Monoclonal, Somatostatin

[Login to edit tags](#)

[Read more about tags](#)

### Resource History & Actions

Approved on  
Last modified on Nov 09, 2010

[Login to edit or request an edit](#)

### Related resources

## BCBC

*No matching resources*

## Other Consortia

*No matching resources*

Data courtesy of [dkCOIN](#). Only public resources are displayed.

## Contact Information

| Preferred Contact |  |
|-------------------|--|
| Name              | Michael Ray  |
| Institution       | Vanderbilt University  |
| Phone             | (615)343-8258  |
| Email             | <a href="mailto:michael.ray@vanderbilt.edu">michael.ray@vanderbilt.edu</a> |

## Associated Publications


| Publication              | Citation  |
|--------------------------|---|
| <a href="#">15031110</a> | Heller RS, Stoffers DA, Liu A, Schedl A, Crenshaw EB, Madsen OD, Serup P<br><a href="#">The role of Brn4/Pou3f4 and Pax6 in forming the pancreatic glucagon cell identity.</a> (2004) <i>Dev Biol</i> <b>268</b> : 123-34 (Added June 21, 2005) |

## Comments



03/09/2007 11:47 AM  
[Klaus Pechhold](#)

SOM-018 works very well, both for IHC-P and for flow cytometry (FCM). It works equally well in human, monkey, and mouse. Since it's a mouse IgG1 I had problems with background staining of mouse tissues especially in (pre)diabetic islets. To overcome this I used Invitrogens Xenon pre-labeling kits for FCM and M.O.M. blocking kits for IHC. It would have been very helpful if this antibody could be obtained fluorochrome-labeled, or at a form that allows self labeling.

 [Login to add comments](#)

[Home](#) · [Your Account](#) · [News & Events](#) · [Resources](#) · [Policies & Guidelines](#) · [About Us](#) · [FAQ](#) · [Site Map](#)

© 2002-2015 Beta Cell Biology Consortium - All Rights Reserved. [Terms of usage and disclaimer.](#)

