

My Account

[Login](#)
[Create Account](#)

Resources

[View All \(813\)](#)
[Adenoviruses \(137\)](#)
[Antibodies \(175\)](#)
[Bioimages \(67\)](#)
[Genomics Studies \(145\)](#)
[mESC Lines \(68\)](#)
[Mouse Strains \(120\)](#)
[Miscellaneous \(46\)](#)
[Protocols \(55\)](#)
[Research Data \(4\)](#)
[Resource Tags \(389\)](#)
[Visualization \(9\)](#)

Research & Cores

[Core Facilities \(5\)](#)
[Research Highlights \(5\)](#)
[Research Networks](#)
[Research Objectives](#)

Information

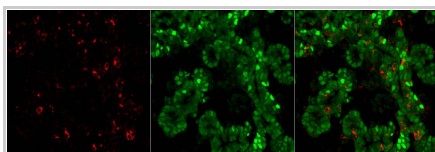
[About the BCBC](#)
[BCBC Events](#)
[Branding & Logos](#)
[Career Opportunities](#)
[Health](#)
[NIH hESC Registry](#)
[Policies & Guidelines](#)
[Member Publications](#)
[Research Programs](#)
[Research Investigators](#)
[Member Directory](#)
[Tutorials](#)

Polyclonal Mouse DNER raised in Goat - Antibody RES2201**Antibody Information**

Antibody ID:	AB2713
Antigen:	DNER (NCBI Gene ID: 227325)
Type:	Polyclonal
Isotype:	Not Applicable
Immunogen Source:	Pur. Rec. extracellular domain
Raised In:	Goat
Peptide:	<i>Not provided</i>
Source of Antigen:	Mouse
Cross Reacts With:	Mouse
Affinity Purified:	Affinity Purified
Purity Details:	<i>Not provided</i>
Positive Control:	4% PFA mouse pancreas e15.5
Notes:	Surface marker. Cell type: Mature endocrine cells - for details: http://www.betacell.org/research/highlights/MADBETA/

Applications and Uses

Application	Concentration	Storage Buffer	Protocols and Description
IHC-Fr	3,3 ug/ml	PBS	Description: Antibody can be use to detect Dner in the embryonic mouse pancreas Protocols: 1. TSA IHC

Associated Images**Image 1**

Description:
4% PFA mouse pancreas e15.5 Gt-DNER (R&D Systems AF2254 Goat) 1:100 TSA-cy3 (red) Rb-Pdx1(1858) 1:600 cy5 (green)

Reference:
Jacob Hald, Hagedorn Research Institute

Repositories**R&D Systems**

[Request via \[www.rndsystems.com\]\(http://www.rndsystems.com\) website](#)
Stock #: AF2254
Availability Notes: *Not provided*

Contact Information**Preferred Contact**

Name	R&D Systems
Institution	<i>Not provided</i>
Phone	1-800-343-7475
Email	info@bio-techne.com

Associated Publications

Publication	Citation
-------------	----------

Access Status

This resource is publicly viewable.

Request this Resource

Request from a repository

Primary contributor: [Antibody Core \(Retired\)](#)
 Co-contributed by:

- [Antibody Core \(USA\)](#)

Resource Tags

antibody, DNER, Mouse, Polyclonal

Login to edit tags

Read more about tags

Resource History & Actions

Approved on
 Last modified on Feb 06, 2012

Login to edit or request an edit

Related resources**BCBC**

No matching resources

Other Consortia

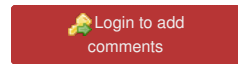
No matching resources

Data courtesy of [dkCOIN](#). Only public resources are displayed.

[21947380](#) Hald J, Galbo T, Rescan C, Radzikowski L, Sprinkel AE, Heimberg H, Ahnfelt-Rønne J, Jensen J, Scharfmann R, Gradwohl G, Kaestner KH, Stoeckert C, Jensen JN, Madsen OD [Pancreatic islet and progenitor cell surface markers with cell sorting potential](#). (2012) *Diabetologia* **55**: 154-65 (Added December 19, 2012)

Comments

There are no comments for this entry.



[Home](#) · [Your Account](#) · [News & Events](#) · [Resources](#) · [Policies & Guidelines](#) · [About Us](#) · [FAQ](#) · [Site Map](#)

© 2002-2015 Beta Cell Biology Consortium - All Rights Reserved. [Terms of usage and disclaimer](#).

