

My Account

[Login](#)
[Create Account](#)

Resources

[View All \(813\)](#)
[Adenoviruses \(137\)](#)
[Antibodies \(175\)](#)
[Bioimages \(67\)](#)
[Genomics Studies \(145\)](#)
[mESC Lines \(68\)](#)
[Mouse Strains \(120\)](#)
[Miscellaneous \(46\)](#)
[Protocols \(55\)](#)
[Research Data \(4\)](#)
[Resource Tags \(389\)](#)
[Visualization \(9\)](#)

Research & Cores

[Core Facilities \(5\)](#)
[Research Highlights \(5\)](#)
[Research Networks](#)
[Research Objectives](#)

Information

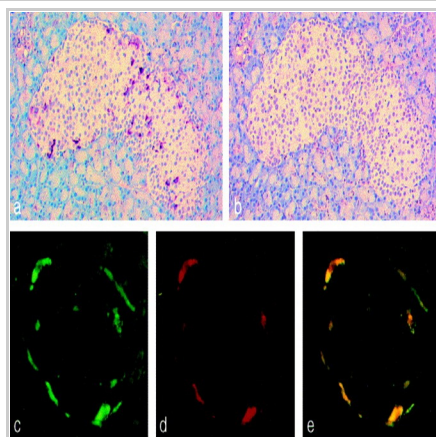
[About the BCBC](#)
[BCBC Events](#)
[Branding & Logos](#)
[Career Opportunities](#)
[Health](#)
[NIH hESC Registry](#)
[Policies & Guidelines](#)
[Member Publications](#)
[Research Programs](#)
[Research Investigators](#)
[Member Directory](#)
[Tutorials](#)

Polyclonal Rat CART raised in Rabbit - Antibody RES972**Antibody Information**

Antibody ID:	AB2544
Antigen:	CART (NCBI Gene ID: 29131)
Type:	Polyclonal
Isotype:	Not Applicable
Immunogen Source:	Peptide
Raised In:	Rabbit
Peptide:	PRRQLRAPGAVLQ coupled to OVA
Source of Antigen:	Rat
Cross Reacts With:	Rat
Affinity Purified:	Serum
Purity Details:	<i>Not provided</i>
Positive Control:	Rat pancreas
Notes:	specific for the 13 amino acid insert unique to the long isoform of CART expressed in rats

Applications and Uses

Application	Concentration	Storage Buffer	Protocols and Description
IHC	<i>Not provided</i>	<i>Not provided</i>	Description: microwave pre-treated dewaxed paraffin sections of rat pancreas incubated overnight with primary antibody Protocols:

Associated Images**Image 1****Description:**

Paraffin sections of rat pancreas (A–E) were stained for CART and islet hormones as follows. A: CART immunoperoxidase staining of a peripheral islet cell population using the peptide specific 2025A antiserum. B: Preabsorption of antiserum 2025A with the immunizing peptide antigen completely abolishes staining. Preabsorption to synthetic somatostatin had no effect (not shown). C–E: Rat pancreas double stained for CART (in green, C) and somatostatin (in red, D). Double exposure (in yellow, E) reveals complete overlap in the distribution of somatostatin and CART-like immunoreactivity

Reference:
10214934


Repositories

BCBC members may [Login](#) to request this resource.

Access Status

 This resource is publicly viewable.

Request this Resource

 Request from a repository

Primary contributor: [Antibody Core \(Retired\)](#)
Co-contributed by:

- [Antibody Core \(USA\)](#)

Resource Tags


AbCore, antibody, CART, Polyclonal, Rat

 Login to edit tags

 Read more about tags

Resource History & Actions

Approved on
Last modified on May 07, 2013

 Login to edit or request an edit

Related resources**BCBC**

No matching resources

Other Consortia

No matching resources

Data courtesy of [dkCOIN](#). Only public resources are displayed.

BCBC members may [Login](#) to request this resource.

Contact Information

Preferred Contact

Name	Michael Ray
Institution	Vanderbilt University
Phone	(615)343-8258
Email	michael.ray@vanderbilt.edu

Associated Publications


Publication Citation

[10214934](#) Jensen PB, Kristensen P, Clausen JT, Judge ME, Hastrup S, Thim L, Wulff BS, Foged C, Jensen J, Holst JJ, Madsen OD [The hypothalamic satiety peptide CART is expressed in anorectic and non-anorectic pancreatic islet tumors and in the normal islet of Langerhans.](#) (1999) *FEBS Lett* **447**: 139-43 (Added August 18, 2010)

[9590691](#) Kristensen P, Judge ME, Thim L, Ribel U, Christjansen KN, Wulff BS, Clausen JT, Jensen PB, Madsen OD, Vrang N, Larsen PJ, Hastrup S [Hypothalamic CART is a new anorectic peptide regulated by leptin.](#) (1998) *Nature* **393**: 72-6 (Added August 18, 2010)

Comments

There are no comments for this entry.

 [Login to add comments](#)

[Home](#) · [Your Account](#) · [News & Events](#) · [Resources](#) · [Policies & Guidelines](#) · [About Us](#) · [FAQ](#) · [Site Map](#)

© 2002-2015 Beta Cell Biology Consortium - All Rights Reserved. [Terms of usage and disclaimer.](#)

