

**My Account**

[Login](#)  
[Create Account](#)

**Resources**

[View All \(813\)](#)  
[Adenoviruses \(137\)](#)  
[Antibodies \(175\)](#)  
[Bioimages \(67\)](#)  
[Genomics Studies \(145\)](#)  
[mESC Lines \(68\)](#)  
[Mouse Strains \(120\)](#)  
[Miscellaneous \(46\)](#)  
[Protocols \(55\)](#)  
[Research Data \(4\)](#)  
[Resource Tags \(389\)](#)  
[Visualization \(9\)](#)

**Research & Cores**

[Core Facilities \(5\)](#)  
[Research Highlights \(5\)](#)  
[Research Networks](#)  
[Research Objectives](#)

**Information**

[About the BCBC](#)  
[BCBC Events](#)  
[Branding & Logos](#)  
[Career Opportunities](#)  
[Health](#)  
[NIH hESC Registry](#)  
[Policies & Guidelines](#)  
[Member Publications](#)  
[Research Programs](#)  
[Research Investigators](#)  
[Member Directory](#)  
[Tutorials](#)

**Polyclonal Mouse Gpr39-1a raised in Rabbit - Antibody RES971****Antibody Information**

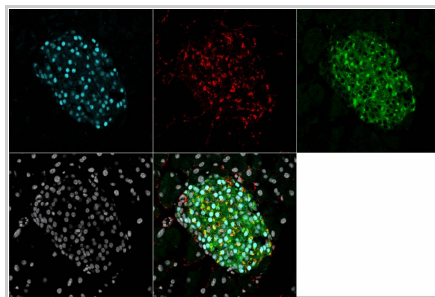
|                    |   |
|--------------------|---|
| Antibody ID:       | AB2543  |
| Antigen:           | Gpr39-1a (NCBI Gene ID: <a href="#">71111</a> ) |
| Type:              | Polyclonal                                      |
| Isotype:           | Not Applicable                                  |
| Immunogen Source:  | Peptide   |
| Raised In:         | Rabbit  |
| Peptide:           | aa 428-446 coupled to KLH                       |
| Source of Antigen: | Mouse   |
| Cross Reacts With: | Mouse   |
| Affinity Purified: | Serum   |
| Purity Details:    | <i>Not provided</i>                             |
| Positive Control:  | Adult mouse pancreas                            |
| Notes:             | <i>Not provided</i>                             |

**Applications and Uses**

| Application | Concentration       | Storage Buffer      | Protocols and Description                      |
|-------------|---------------------|---------------------|--|
| IHC         | <i>Not provided</i> | <i>Not provided</i> | Description: <i>Not provided</i><br>Protocols: |

**Associated Images**

Image 1



**Description:**  
Adult mouse pancreas with rabbit a-Gpr39-1a 2491A (red), Pdx1 (blue) insulin (green) and DAPI.

**Reference:**  
Jacob Hald, Hagedorn Research Institute

**Repositories**

BCBC members may [Login](#) to request this resource.

BCBC members may [Login](#) to request this resource.


**Contact Information****Preferred Contact**

|             |  |
|-------------|--|
| Name        | Michael Ray  |
| Institution | Vanderbilt University  |
| Phone       | (615)343-8258  |
| Email       | <a href="mailto:michael.ray@vanderbilt.edu">michael.ray@vanderbilt.edu</a> |


**Associated Publications**

| Publication              | Citation   |
|--------------------------|--|
| <a href="#">19213833</a> | Holst B, Egerod KL, Jin C, Petersen PS, Østergaard MV, Hald J, Sprinkel AM, Størling J, Mandrup-Poulsen T, Holst JJ, Thams P, Orskov C, Wierup N, Sundler F, Madsen OD, Schwartz TW <a href="#">G protein-coupled receptor 39 deficiency</a> |

**Access Status**

 This resource is publicly viewable.

**Request this Resource**


 Request from a repository


Primary contributor: [Antibody Core \(Retired\)](#)  
Co-contributed by:  

- [Antibody Core \(USA\)](#)

**Resource Tags**


AbCore, antibody, Gpr39-1a, Mouse, Polyclonal

 Login to edit tags

 Read more about tags

**Resource History & Actions**

Approved on  
Last modified on Jul 15, 2009

 Login to edit or request an edit

**Related resources****BCBC**

*No matching resources*

**Other Consortia**

*No matching resources*

Data courtesy of [dkCOIN](#). Only public resources are displayed.


is associated with pancreatic islet dysfunction. (2009) *Endocrinology* **150**: 2577-85 (Added November 29, 2012)

---

## Comments

---

*There are no comments for this entry.*

 Login to add  
comments

[Home](#) · [Your Account](#) · [News & Events](#) · [Resources](#) · [Policies & Guidelines](#) · [About Us](#) · [FAQ](#) · [Site Map](#)

© 2002-2015 Beta Cell Biology Consortium - All Rights Reserved. [Terms of usage and disclaimer.](#)

