

## My Account

Login  
Create Account

## Resources

View All (813)  
Adenoviruses (137)  
Antibodies (175)  
Bioimages (67)  
Genomics Studies (145)  
mESC Lines (68)  
Mouse Strains (120)  
Miscellaneous (46)  
Protocols (55)  
Research Data (4)  
Resource Tags (389)  
Visualization (9)

## Research &amp; Cores

Core Facilities (5)  
Research Highlights (5)  
Research Networks  
Research Objectives

## Information

About the BCBC  
BCBC Events  
Branding & Logos  
Career Opportunities  
Health  
NIH hESC Registry  
Policies & Guidelines  
Member Publications  
Research Programs  
Research Investigators  
Member Directory  
Tutorials

## Polyclonal Mouse Sez6l2 raised in Rabbit - Antibody RES967

### Antibody Information

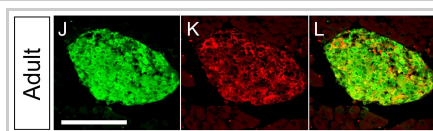
Antibody ID:	AB2539
Antigen:	Sez6l2 (NCBI Gene ID: <a href="#">20370</a> )
Type:	Polyclonal
Isotype:	Not Applicable
Immunogen Source:	Peptide
Raised In:	Rabbit
Peptide:	aa 37-55 coupled to KLH
Source of Antigen:	Mouse
Cross Reacts With:	Mouse, Human
Affinity Purified:	Serum
Purity Details:	<i>Not provided</i>
Positive Control:	adult mouse pancreas
Notes:	Best for mouse but also works on human tissue Surface marker. Cell type: Mature endocrine cells

### Applications and Uses

Application	Concentration	Storage Buffer	Protocols and Description
IHC	1:2000, with TSA	Serum	Description: For IHC Protocols: 1. <a href="#">IHC, TSA</a>

### Associated Images

## Image 1



**Description:**  
Adult pancreas stain for Sez6l2 (red) and insulin (green)

**Reference:**  
21947380

### Repositories

BCBC members may [Login](#) to request this resource.

BCBC members may [Login](#) to request this resource.

### Contact Information


## Preferred Contact

Name	Michael Ray
Institution	Vanderbilt University
Phone	(615)343-8258
Email	<a href="mailto:michael.ray@vanderbilt.edu">michael.ray@vanderbilt.edu</a>


### Associated Publications

Publication	Citation
<a href="#">21947380</a>	Hald J, Galbo T, Rescan C, Radzikowski L, Sprinkel AE, Heimberg H, Ahnfelt-Rønne J, Jensen J, Scharfmann R, Gradwohl G, Kaestner KH, Stoeckert C, Jensen JN, Madsen OD <a href="#">Pancreatic islet and progenitor cell surface markers with cell sorting potential</a> . (2012) <i>Diabetologia</i> <b>55</b> : 154-65 (Added December 19, 2012)

### Access Status

 This resource is publicly viewable.


### Request this Resource


 Request from a repository

Primary contributor: [Antibody Core \(Retired\)](#)  
Co-contributed by:  
• [Antibody Core \(USA\)](#)

### Resource Tags

AbCore, antibody, Mouse, Polyclonal, Sez6l2

 Login to edit tags

 Read more about tags

### Resource History & Actions

Approved on  
Last modified on Feb 06, 2012

 Login to edit or request an edit

### Related resources

## BCBC

*No matching resources*

## Other Consortia

*No matching resources*


Data courtesy of [dkCOIN](#). Only public resources are displayed.

---

## Comments

---

*There are no comments for this entry.*

 [Login to add comments](#)

---

[Home](#) · [Your Account](#) · [News & Events](#) · [Resources](#) · [Policies & Guidelines](#) · [About Us](#) · [FAQ](#) · [Site Map](#)

© 2002-2015 Beta Cell Biology Consortium - All Rights Reserved. [Terms of usage and disclaimer.](#)

