

My Account

Login
Create Account

Resources

View All (813)
Adenoviruses (137)
Antibodies (175)
Bioimages (67)
Genomics Studies (145)
mESC Lines (68)
Mouse Strains (120)
Miscellaneous (46)
Protocols (55)
Research Data (4)
Resource Tags (389)
Visualization (9)

Research & Cores

Core Facilities (5)
Research Highlights (5)
Research Networks
Research Objectives

Information

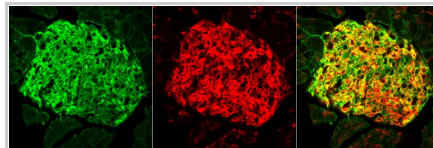
About the BCBC
BCBC Events
Branding & Logos
Career Opportunities
Health
NIH hESC Registry
Policies & Guidelines
Member Publications
Research Programs
Research Investigators
Member Directory
Tutorials

Monoclonal Mouse BetaTC6 raised in Mouse - Antibody RES962**Antibody Information**

Antibody ID:	AB2534
Antigen:	BetaTC6 <i>(No Gene ID associated)</i>
Type:	Monoclonal
Isotype:	IgM
Immunogen Source:	BetaTC6 cell line
Raised In:	Mouse
Peptide:	<i>Not provided</i>
Source of Antigen:	Mouse
Cross Reacts With:	Mouse
Affinity Purified:	Supernatant
Purity Details:	<i>Not provided</i>
Positive Control:	BetaTC6 cell line
Notes:	<i>Not provided</i>

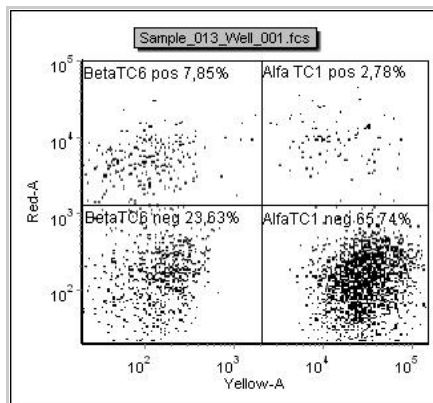
Applications and Uses

Application	Concentration	Storage Buffer	Protocols and Description
FACS	<i>Not provided</i>	<i>Not provided</i>	Description: Cells are incubated 30 min (cold) with diluted antibody, washed two times, incubated 30 min (cold) with appropriate secondary reagent, washed and fixed with PFA followed by FACS analysis Protocols:
IHC	<i>Not provided</i>	<i>Not provided</i>	Description: <i>Not provided</i> Protocols:

Associated Images**Image 1**

Description:
Adult mouse pancreas (TSA) stained with F19A3 (red) and insulin (green)


Reference:
Jacob Hald, Hagedorn Research Institute

Image 2


Description:
Binding of F19A3 to BetaTC6 cells compared with AlfaTC1 cells.

Reference:
Anne Ejrnaes Sprinkel

Repositories**Access Status**

 This resource is publicly viewable.

Request this Resource

 Request from a repository

Primary contributor: [Antibody Core](#)


(Retired)

Co-contributed by:

- [Antibody Core \(USA\)](#)

Resource Tags


AbCore, antibody, BetaTC6, Monoclonal, Mouse

 Login to edit tags

 Read more about tags

Resource History & Actions

Approved on
Last modified on Feb 11, 2009

 Login to edit or request an edit

Related resources**BCBC**

No matching resources

Other Consortia

No matching resources

Data courtesy of [dkCOIN](#). Only public resources are displayed.

BCBC members may [Login](#) to request this resource.

Contact Information

Preferred Contact

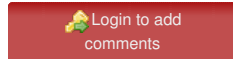
Name	Ole Madsen
Institution	Hagedorn Research Institute
Phone	+45 4443 9197
Email	odm@hagedorn.dk

Associated Publications

No publications associated

Comments

There are no comments for this entry.



[Home](#) · [Your Account](#) · [News & Events](#) · [Resources](#) · [Policies & Guidelines](#) · [About Us](#) · [FAQ](#) · [Site Map](#)

© 2002-2015 Beta Cell Biology Consortium - All Rights Reserved. [Terms of usage and disclaimer.](#)

