

**My Account**

[Login](#)  
[Create Account](#)

**Resources**

[View All \(813\)](#)  
[Adenoviruses \(137\)](#)  
[Antibodies \(175\)](#)  
[Bioimages \(67\)](#)  
[Genomics Studies \(145\)](#)  
[mESC Lines \(68\)](#)  
[Mouse Strains \(120\)](#)  
[Miscellaneous \(46\)](#)  
[Protocols \(55\)](#)  
[Research Data \(4\)](#)  
[Resource Tags \(389\)](#)  
[Visualization \(9\)](#)

**Research & Cores**

[Core Facilities \(5\)](#)  
[Research Highlights \(5\)](#)  
[Research Networks](#)  
[Research Objectives](#)

**Information**

[About the BCBC](#)  
[BCBC Events](#)  
[Branding & Logos](#)  
[Career Opportunities](#)  
[Health](#)  
[NIH hESC Registry](#)  
[Policies & Guidelines](#)  
[Member Publications](#)  
[Research Programs](#)  
[Research Investigators](#)  
[Member Directory](#)  
[Tutorials](#)

**Monoclonal Mouse BetaTC6 raised in Mouse - Antibody RES961****Antibody Information**

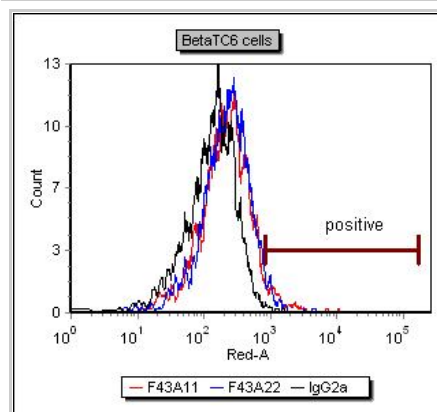
<b>Antibody ID:</b>	AB2533
<b>Antigen:</b>	BetaTC6 <i>(No Gene ID associated)</i>
<b>Type:</b>	Monoclonal
<b>Isotype:</b>	IgG2a
<b>Immunogen Source:</b>	BetaTC6 cell line
<b>Raised In:</b>	Mouse
<b>Peptide:</b>	<i>Not provided</i>
<b>Source of Antigen:</b>	Mouse
<b>Cross Reacts With:</b>	Mouse,Rat
<b>Affinity Purified:</b>	Purified
<b>Purity Details:</b>	Protein A purified
<b>Positive Control:</b>	BetaTC6 cells
<b>Notes:</b>	<i>Not provided</i>

**Applications and Uses**

Application	Concentration	Storage Buffer	Protocols and Description
FACS	10 microgram/ml	PBS	Description: Cells are incubated 30 min (cold) with diluted antibody, washed two times, incubated 30 min (cold) with appropriate secondary reagent, washed and fixed with PFA followed by FACS analysis Protocols:

**Associated Images**

Image 1

**Description:**

Binding of F43A22 and F43A11 to BetaTC6 cells compared to isotype control (IgG2a)

**Reference:**

Anne Ejrnaes Sprinkel

Image 2


**Description:**

Binding of F43A22 and F43A11 to BetaTC3 cells compared to isotype control (IgG2a).


**Reference:**

Anne Ejrnaes Sprinkel

**Access Status**

 This resource is publicly viewable.

**Request this Resource**

 Request from a repository

Primary contributor: [Antibody Core](#)


(Retired)


Co-contributed by:

- [Antibody Core \(USA\)](#)

**Resource Tags**

AbCore, antibody, BetaTC6, Monoclonal, Mouse

 Login to edit tags

 Read more about tags

**Resource History & Actions**

Approved on  
Last modified on Feb 11, 2009

 Login to edit or request an edit

**Related resources****BCBC**

*No matching resources*

**Other Consortia**

*No matching resources*

Data courtesy of [dkCOIN](#). Only public resources are displayed.

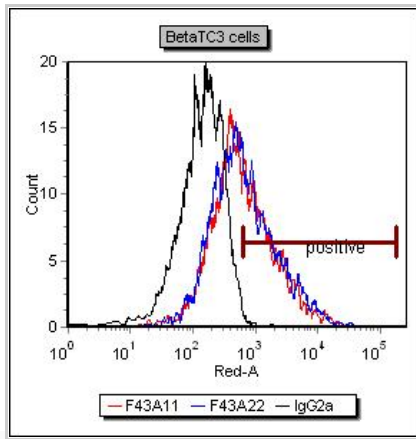
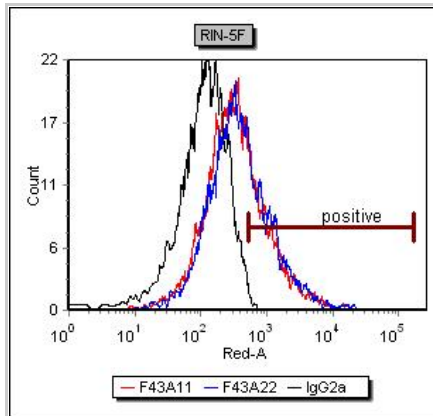


Image 3



**Description:**

Binding of F43A22 and F43A11 to RIN-5F cells compared to isotype control (IgG2a).

**Reference:**

Anne Ejrnaes Sprinkel

**Repositories**

BCBC members may [Login](#) to request this resource.

**Contact Information**

**Preferred Contact**

<b>Name</b>	Ole Madsen
<b>Institution</b>	Hagedorn Research Institute
<b>Phone</b>	+45 4443 9197
<b>Email</b>	<a href="mailto:odm@hagedorn.dk">odm@hagedorn.dk</a>

**Associated Publications**

*No publications associated*

**Comments**

*There are no comments for this entry.*

[Login to add comments](#)

