

My Account

Login
Create Account

Resources

View All (813)
Adenoviruses (137)
Antibodies (175)
Bioimages (67)
Genomics Studies (145)
mESC Lines (68)
Mouse Strains (120)
Miscellaneous (46)
Protocols (55)
Research Data (4)
Resource Tags (389)
Visualization (9)

Research & Cores

Core Facilities (5)
Research Highlights (5)
Research Networks
Research Objectives

Information

About the BCBC
BCBC Events
Branding & Logos
Career Opportunities
Health
NIH hESC Registry
Policies & Guidelines
Member Publications
Research Programs
Research Investigators
Member Directory
Tutorials

Monoclonal Mouse Pancreatic duct cells raised in Rat - Antibody RES942**Antibody Information**

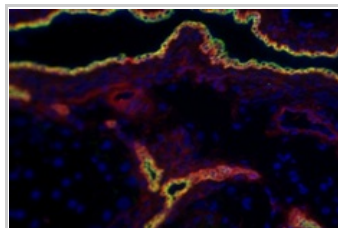
Antibody ID:	AB2514
Antigen:	Pancreatic duct cells (<i>No Gene ID associated</i>)
Type:	Monoclonal
Isotype:	IgG1
Immunogen Source:	Cells
Raised In:	Rat
Peptide:	<i>Not provided</i>
Source of Antigen:	Mouse
Cross Reacts With:	Mouse
Affinity Purified:	Supernatant
Purity Details:	<i>Not provided</i>
Positive Control:	Mouse pancreas
Notes:	This antibody was generated following immunization of rats with enriched mouse islets. The antibody was found to react with a cell surface molecule on duct cells in both the pancreas and the liver.

Applications and Uses

Application	Concentration	Storage Buffer	Protocols and Description
IHC-AF	Undiluted	As provided	Description: This antibody was raised against enzyme dispersed mouse pancreas. This antibody has been found to selectively react with a cell surface molecule on mouse pancreatic and liver duct cells. Cells expressing the molecule can be detected in tissue sections by immunohistochemistry. Protocols:
FACS	Undiluted	As provided	Description: This antibody was raised against enzyme dispersed mouse pancreas. This antibody has been found to selectively react with a cell surface molecule on mouse pancreatic and liver duct cells. Cells expressing the molecule can be detected by FACS. Protocols:

Associated Images

Image 1



Description:
Frozen section of mouse pancreas illustrating reactivity of MIC1-1-C3 (red) and anti-cytokeratin 19 (green) with duct cell populations. Co-staining appears yellow.

Reference:
Not provided


Repositories

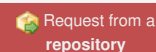
Streeter Lab



Stock #: *Not provided*
Availability Notes: *Not provided*

Contact Information**Access Status**

 This resource is publicly viewable.

Request this Resource

Primary contributor: [Grompe Lab](#)


Co-contributed by:

- [Streeter Lab](#)
- [Keller Lab](#)

Resource Tags

antibody, Monoclonal, Mouse, Pancreatic duct cells



 [Read more about tags](#)

Resource History & Actions

Approved on
Last modified on Feb 10, 2009

**Related resources****BCBC**

No matching resources

Other Consortia

No matching resources

Data courtesy of [dkCOIN](#). Only public resources are displayed.

Preferred Contact


Name	Philip Streeter
Institution	Oregon Health & Science University
Phone	503-494-1762
Email	streetep@ohsu.edu

Associated Publications

No publications associated

Comments

There are no comments for this entry.

 [Login to add comments](#)

