

My Account

Login
Create Account

Resources

View All (813)
Adenoviruses (137)
Antibodies (175)
Bioimages (67)
Genomics Studies (145)
mESC Lines (68)
Mouse Strains (120)
Miscellaneous (46)
Protocols (55)
Research Data (4)
Resource Tags (389)
Visualization (9)

Research & Cores

Core Facilities (5)
Research Highlights (5)
Research Networks
Research Objectives

Information

About the BCBC
BCBC Events
Branding & Logos
Career Opportunities
Health
NIH hESC Registry
Policies & Guidelines
Member Publications
Research Programs
Research Investigators
Member Directory
Tutorials

Monoclonal Human Hu ES-Derived Early Endoderm raised in Mouse - Antibody RES941

Antibody Information

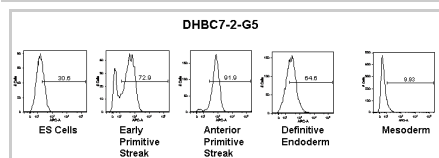
Antibody ID:	AB2513
Antigen:	Hu ES-Derived Early Endoderm <i>(No Gene ID associated)</i>
Type:	Monoclonal
Isotype:	IgG1
Immunogen Source:	Cells
Raised In:	Mouse
Peptide:	<i>Not provided</i>
Source of Antigen:	Human
Cross Reacts With:	Human
Affinity Purified:	Supernatant
Purity Details:	<i>Not provided</i>
Positive Control:	Human ES-Derived Early Endoderm
Notes:	The following is a preliminary discussion of the specificity of the reported antibody. This antibody was raised against day 6 early endoderm generated from human ES cells. This antibody has been found to selectively react with a cell surface molecule on human ES-derived cultures enriched for early primitive streak and anterior primitive streak, and to a lesser extent on ES cells and definitive endoderm, and not with mesoderm.

Applications and Uses

Application	Concentration	Storage Buffer	Protocols and Description
FACS	Undiluted	As provided	Description: This antibody was raised against day 6 early endoderm generated from human ES cells. This antibody has been found to selectively react with a cell surface molecule on human ES-derived cultures enriched for early primitive streak and anterior primitive streak. Cells expressing the molecule can be detected by FACS. Protocols:

Associated Images

Image 1



Description:

This figure illustrates staining of a subset of cells in human ES-derived cultures enriched for early primitive streak and anterior primitive streak. Cells were incubated with the monoclonal antibody, washed, then incubated with an allophycocyanin-conjugated anti-mouse-Ig.

Reference:


Not provided

Repositories


BCBC members may [Login](#) to request this resource.

Contact Information

Access Status

 This resource is publicly viewable.

Request this Resource

 Request from a repository

Primary contributor: [Grompe Lab](#)

Co-contributed by:

- [Streeter Lab](#)
- [Keller Lab](#)

Resource Tags

antibody, Hu ES-Derived Early Endoderm, Human, Monoclonal

 Login to edit tags

 Read more about tags

Resource History & Actions

Approved on
Last modified on Feb 10, 2009

 Login to edit or request an edit

Related resources

BCBC

No matching resources

Other Consortia

No matching resources

Data courtesy of [dkCOIN](#). Only public resources are displayed.

Preferred Contact


Name	Philip Streeter
Institution	Oregon Health & Science University
Phone	503-494-1762
Email	streetep@ohsu.edu

Associated Publications

No publications associated

Comments

There are no comments for this entry.

 [Login to add comments](#)

[Home](#) · [Your Account](#) · [News & Events](#) · [Resources](#) · [Policies & Guidelines](#) · [About Us](#) · [FAQ](#) · [Site Map](#)

© 2002-2015 Beta Cell Biology Consortium - All Rights Reserved. [Terms of usage and disclaimer](#).

