

**My Account**

[Login](#)  
[Create Account](#)

**Resources**

[View All \(813\)](#)  
[Adenoviruses \(137\)](#)  
[Antibodies \(175\)](#)  
[Bioimages \(67\)](#)  
[Genomics Studies \(145\)](#)  
[mESC Lines \(68\)](#)  
[Mouse Strains \(120\)](#)  
[Miscellaneous \(46\)](#)  
[Protocols \(55\)](#)  
[Research Data \(4\)](#)  
[Resource Tags \(389\)](#)  
[Visualization \(9\)](#)

**Research & Cores**

[Core Facilities \(5\)](#)  
[Research Highlights \(5\)](#)  
[Research Networks](#)  
[Research Objectives](#)

**Information**

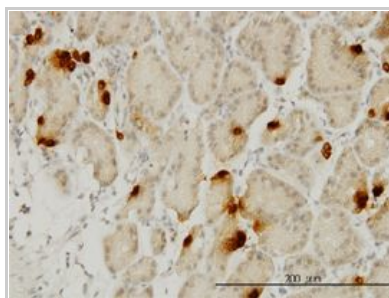
[About the BCBC](#)  
[BCBC Events](#)  
[Branding & Logos](#)  
[Career Opportunities](#)  
[Health](#)  
[NIH hESC Registry](#)  
[Policies & Guidelines](#)  
[Member Publications](#)  
[Research Programs](#)  
[Research Investigators](#)  
[Member Directory](#)  
[Tutorials](#)

**Monoclonal Human ghrelin raised in Mouse - Antibody RES4563****Antibody Information**

<b>Antibody ID:</b>	AB3994
<b>Antigen:</b>	ghrelin (NCBI Gene ID: <a href="#">51738</a> )
<b>Type:</b>	Monoclonal
<b>Isotype:</b>	IgG2a
<b>Immunogen Source:</b>	Purified Protein
<b>Raised In:</b>	Mouse
<b>Peptide:</b>	<i>Not provided</i>
<b>Source of Antigen:</b>	Human
<b>Cross Reacts With:</b>	Human
<b>Affinity Purified:</b>	Affinity Purified
<b>Purity Details:</b>	<i>Not provided</i>
<b>Positive Control:</b>	Hela cell lysate
<b>Notes:</b>	<i>Not provided</i>

**Applications and Uses**

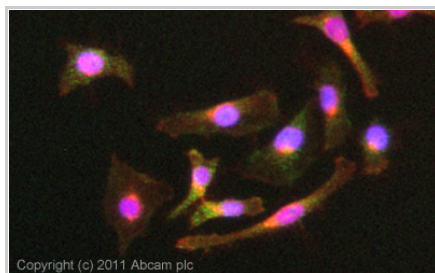
Application	Concentration	Storage Buffer	Protocols and Description
IHC-P	3 µg/ml	PBS, pH 7.2	Description: <i>Not provided</i> Protocols:
WB	1 - 5 µg/ml	PBS, pH 7.2	Description: <i>Not provided</i> Protocols:
ICC/IF	5 µg/ml	PBS, pH 7.2	Description: <i>Not provided</i> Protocols:

**Associated Images****Image 1****Description:**

Ghrelin antibody (ab57222) used in immunohistochemistry at 3µg/ml on formalin fixed and paraffin embedded human stomach.


**Reference:**

AbCam (ab57222)


**Image 2****Description:**

ICC/IF image of ab57222 stained HeLa cells. The cells were 4% formaldehyde (10 min) and then incubated in 1%BSA / 10% normal goat serum / 0.3M glycine in 0.1% PBS-Tween for 1h to permeabilise the cells and block non-specific protein-protein interactions. The cells were then incubated with the antibody (ab57222, 5µg/ml) overnight at +4 °C. The secondary antibody (green) was ab96879 Dylight 488 goat anti-mouse IgG (H+L)

**Access Status**

 This resource is publicly viewable.


**Request this Resource**


 Request from a repository

Primary contributor: [Jean-Philippe Cartailier](#)

**Resource Tags**

antibody, ghrelin, Human, Monoclonal

 Login to edit tags

 Read more about tags

**Resource History & Actions**

Approved on  
Last modified on Feb 21, 2013

 Login to edit or request an edit

**Related resources****BCBC**

*No matching resources*

**Other Consortia**

*No matching resources*

Data courtesy of [dkCOIN](#). Only public resources are displayed.

used at a 1/250 dilution for 1h.  
Alexa Fluor® 594 WGA was used to label plasma membranes (red) at a 1/200 dilution for 1h. DAPI was used to stain the cell nuclei (blue) at a concentration of 1.43µM.

**Reference:**  
AbCam (ab57222)

---

## Repositories

AbCam

 Request via [www.abcam.com](http://www.abcam.com) website

**Stock #:** ab57222

**Availability Notes:** *Not provided*

---

## Contact Information

Preferred Contact

**Name** abcam

**Institution** *Not provided*

**Phone** (888) 77-ABCAM (22226)

**Email** [us.orders@abcam.com](mailto:us.orders@abcam.com)


---

## Associated Publications

*No publications associated*

## Comments

*There are no comments for this entry.*

 Login to add comments

[Home](#) · [Your Account](#) · [News & Events](#) · [Resources](#) · [Policies & Guidelines](#) · [About Us](#) · [FAQ](#) · [Site Map](#)

© 2002-2015 Beta Cell Biology Consortium - All Rights Reserved. [Terms of usage and disclaimer](#).

