

My Account

Login
Create Account

Resources

View All (813)
Adenoviruses (137)
Antibodies (175)
Bioimages (67)
Genomics Studies (145)
mESC Lines (68)
Mouse Strains (120)
Miscellaneous (46)
Protocols (55)
Research Data (4)
Resource Tags (389)
Visualization (9)

Research & Cores

Core Facilities (5)
Research Highlights (5)
Research Networks
Research Objectives

Information

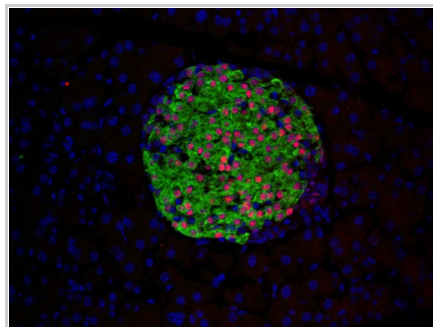
About the BCBC
BCBC Events
Branding & Logos
Career Opportunities
Health
NIH hESC Registry
Policies & Guidelines
Member Publications
Research Programs
Research Investigators
Member Directory
Tutorials

Polyclonal Mouse PDX1 raised in Chicken - Antibody RES4553**Antibody Information**

Antibody ID:	AB3934
Antigen:	PDX1 (NCBI Gene ID: 102851)
Type:	Polyclonal
Isotype:	Not Applicable
Immunogen Source:	Fusion Protein
Raised In:	Chicken
Peptide:	<i>Not provided</i>
Source of Antigen:	Mouse
Cross Reacts With:	Mouse, Human
Affinity Purified:	Affinity Purified
Purity Details:	<i>Not provided</i>
Positive Control:	<i>Not provided</i>
Notes:	It is critical to know that this antibody is IgY.

Applications and Uses

Application	Concentration	Storage Buffer	Protocols and Description
IHC	1:1000	PBS, 5% fetal calf serum, 5% glycerol	Description: Recommended IF dilution is 1:1000. Protocols:

Associated Images**Image 1****Description:**

Pdx1 (red) insulin (green) DAPI (blue) IF/Adult mouse pancreas cryosections 1:100

Reference:

Not provided

Repositories**Wright Lab**

Request this resource	Stock #: <i>Not provided</i> Availability Notes: <i>Not provided</i>
---------------------------------------	---


Contact Information**Preferred Contact**

Name	Michael Ray
Institution	Vanderbilt University
Phone	(615)343-8258
Email	michael.ray@vanderbilt.edu

Primary Lab Contact

Name	Chris Wright
-------------	--------------

Access Status

 This resource is publicly viewable.

Request this Resource

[Request from a repository](#)

Primary contributor: [Wright Lab](#)

Resource Tags

antibody, Mouse, PDX1, Polyclonal

[Login to edit tags](#)

[Read more about tags](#)

Resource History & Actions

Approved on
Last modified on Oct 17, 2012

[Login to edit or request an edit](#)

Related resources**BCBC**

No matching resources

Other Consortia

No matching resources

Data courtesy of [dkCOIN](#). Only public resources are displayed.

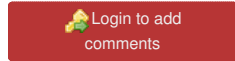
Institution	Vanderbilt University
Phone	615-343-8256
Email	chris.wright@vanderbilt.edu

Associated Publications

No publications associated

Comments

There are no comments for this entry.



[Home](#) · [Your Account](#) · [News & Events](#) · [Resources](#) · [Policies & Guidelines](#) · [About Us](#) · [FAQ](#) · [Site Map](#)

© 2002-2015 Beta Cell Biology Consortium - All Rights Reserved. [Terms of usage and disclaimer.](#)

