

My Account

Login
Create Account

Resources

View All (813)
Adenoviruses (137)
Antibodies (175)
Bioimages (67)
Genomics Studies (145)
mESC Lines (68)
Mouse Strains (120)
Miscellaneous (46)
Protocols (55)
Research Data (4)
Resource Tags (389)
Visualization (9)

Research & Cores

Core Facilities (5)
Research Highlights (5)
Research Networks
Research Objectives

Information

About the BCBC
BCBC Events
Branding & Logos
Career Opportunities
Health
NIH hESC Registry
Policies & Guidelines
Member Publications
Research Programs
Research Investigators
Member Directory
Tutorials

Polyclonal Mouse PDX1 raised in Chicken - Antibody RES4552**Antibody Information**

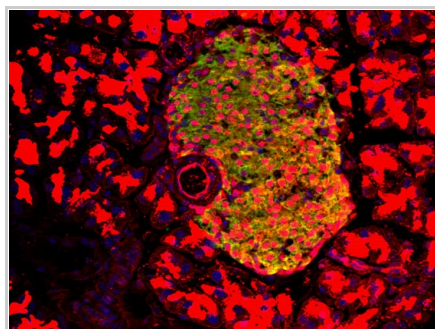
Antibody ID:	AB3914
Antigen:	PDX1 (NCBI Gene ID: 102851)
Type:	Polyclonal
Isotype:	Not Applicable
Immunogen Source:	Fusion Protein
Raised In:	Chicken
Peptide:	<i>Not provided</i>
Source of Antigen:	Mouse
Cross Reacts With:	Mouse, Human
Affinity Purified:	Serum
Purity Details:	<i>Not provided</i>
Positive Control:	<i>Not provided</i>
Notes:	"Antibody purity" as stated above is actually raw antibody taken from egg extract, not "serum". It is critical to know that this antibody is IgY.

Applications and Uses

Application	Concentration	Storage Buffer	Protocols and Description
See Description	<i>Not provided</i>	PBS, 0.02% sodium azide	Description: This antibody is inappropriate for IHC/IF, but as is the case with many antibodies it needs to be verified if it will be useful for other applications such as ChIP/Chip-Seq, flow cytometry, and western blots. Protocols:

Associated Images

Image 1

**Description:**

Pdx1 (red) insulin (green) DAPI (blue) IF/Adult mouse pancreas cryosections 1:100

Reference:

Not provided

Repositories

Wright Lab




Stock #: *Not provided*
Availability Notes: *Not provided*

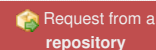
Contact Information

Preferred Contact

Name	Michael Ray
Institution	Vanderbilt University
Phone	(615)343-8258

Access Status

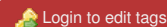
 This resource is publicly viewable.

Request this Resource

Primary contributor: [Wright Lab](#)

Resource Tags

antibody, Mouse, PDX1, Polyclonal



 [Read more about tags](#)

Resource History & Actions

Approved on
Last modified on Oct 17, 2012

**Related resources****BCBC**

No matching resources

Other Consortia

No matching resources

Data courtesy of [dkCOIN](#). Only public resources are displayed.

Email	michael.ray@vanderbilt.edu
Primary Lab Contact	
Name	Chris Wright
Institution	Vanderbilt University
Phone	615-343-8256
Email	chris.wright@vanderbilt.edu

Associated Publications


No publications associated

Comments



10/17/2012 02:00 PM
[Michael Ray](#)

The affinity-purified version of this antibody reduces IF/IHC background greatly (See RES4553). The raw antibody may be useful for other applications [ChIP/ChIP-Seq, flow cytometry, western blots].

 Login to add comments

[Home](#) · [Your Account](#) · [News & Events](#) · [Resources](#) · [Policies & Guidelines](#) · [About Us](#) · [FAQ](#) · [Site Map](#)

© 2002-2015 Beta Cell Biology Consortium - All Rights Reserved. [Terms of usage and disclaimer](#).

