

**My Account**

[Login](#)  
[Create Account](#)

**Resources**

[View All \(813\)](#)  
[Adenoviruses \(137\)](#)  
[Antibodies \(175\)](#)  
[Bioimages \(67\)](#)  
[Genomics Studies \(145\)](#)  
[mESC Lines \(68\)](#)  
[Mouse Strains \(120\)](#)  
[Miscellaneous \(46\)](#)  
[Protocols \(55\)](#)  
[Research Data \(4\)](#)  
[Resource Tags \(389\)](#)  
[Visualization \(9\)](#)

**Research & Cores**

[Core Facilities \(5\)](#)  
[Research Highlights \(5\)](#)  
[Research Networks](#)  
[Research Objectives](#)

**Information**

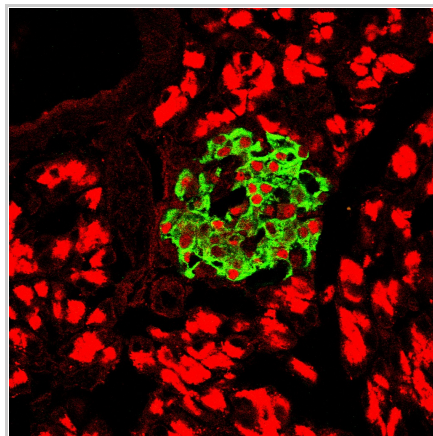
[About the BCBC](#)  
[BCBC Events](#)  
[Branding & Logos](#)  
[Career Opportunities](#)  
[Health](#)  
[NIH hESC Registry](#)  
[Policies & Guidelines](#)  
[Member Publications](#)  
[Research Programs](#)  
[Research Investigators](#)  
[Member Directory](#)  
[Tutorials](#)

**Polyclonal Mouse Nkx6.1 raised in Chicken - Antibody RES4550****Antibody Information**

<b>Antibody ID:</b>	AB3874
<b>Antigen:</b>	Nkx6.1 (NCBI Gene ID: <a href="#">1206039</a> )
<b>Type:</b>	Polyclonal
<b>Isotype:</b>	Not Applicable
<b>Immunogen Source:</b>	Fusion Protein
<b>Raised In:</b>	Chicken
<b>Peptide:</b>	<i>Not provided</i>
<b>Source of Antigen:</b>	Mouse
<b>Cross Reacts With:</b>	Mouse, Human
<b>Affinity Purified:</b>	Serum
<b>Purity Details:</b>	<i>Not provided</i>
<b>Positive Control:</b>	<i>Not provided</i>
<b>Notes:</b>	"Antibody purity" as stated above is raw antibody taken from egg extract not "serum". It is critical to know that this antibody is IgY.

**Applications and Uses**

Application	Concentration	Storage Buffer	Protocols and Description
See Description	<i>Not provided</i>	PBS, 0.02% sodium azide	Description: This antibody is inappropriate for IHC/IF, but as is the case with many antibodies it needs to be verified if it will be useful for other applications such as ChIP/Chip-Seq, flow cytometry, and western blots. Protocols:


**Associated Images****Image 1****Description:**

Nkx6.1 (red) Insulin (green)  
IF/Adult mouse pancreas.  
1:2000


**Reference:**

*Not provided*

**Access Status**

 This resource is publicly viewable.


**Request this Resource**


 Request from a repository

Primary contributor: [Wright Lab](#)

**Resource Tags**


antibody, Mouse, Nkx6.1, Polyclonal

 Login to edit tags

 [Read more about tags](#)

**Resource History & Actions**

Approved on  
Last modified on Oct 17, 2012

 Login to edit or request an edit

**Related resources****BCBC**


*No matching resources*

**Other Consortia**

*No matching resources*

Data courtesy of [dkCOIN](#). Only public resources are displayed.

**Repositories****Wright Lab**

 Request this resource

Stock #: *Not provided*  
Availability Notes: *Not provided*

**Contact Information****Preferred Contact**

<b>Name</b>	Michael Ray
<b>Institution</b>	Vanderbilt University
<b>Phone</b>	(615)343-8258
<b>Email</b>	<a href="mailto:michael.ray@vanderbilt.edu">michael.ray@vanderbilt.edu</a>
<b>Primary Lab Contact</b>	
<b>Name</b>	Chris Wright
<b>Institution</b>	Vanderbilt University
<b>Phone</b>	615-343-8256
<b>Email</b>	<a href="mailto:chris.wright@vanderbilt.edu">chris.wright@vanderbilt.edu</a>

### Associated Publications


*No publications associated*

### Comments



10/17/2012 01:58 PM  
[Michael Ray](#)

The affinity-purified version of this antibody reduces IF/IHC background greatly (See RES4551). The raw antibody be useful for other applications [ChIP/ChIP-Seq, flow cytometry, western blots]. Antigen was a bacterial GST fusion protein originally made by Palle Serup (Jensen et.al. (1996) J Biol Chem 271:18749-58).

 Login to add comments

