

My Account

Login
Create Account

Resources

View All (813)
Adenoviruses (137)
Antibodies (175)
Bioimages (67)
Genomics Studies (145)
mESC Lines (68)
Mouse Strains (120)
Miscellaneous (46)
Protocols (55)
Research Data (4)
Resource Tags (389)
Visualization (9)

Research & Cores

Core Facilities (5)
Research Highlights (5)
Research Networks
Research Objectives

Information

About the BCBC
BCBC Events
Branding & Logos
Career Opportunities
Health
NIH hESC Registry
Policies & Guidelines
Member Publications
Research Programs
Research Investigators
Member Directory
Tutorials

Monoclonal Rat Beta cell, IC2 raised in Rat - Antibody RES4134

Antibody Information

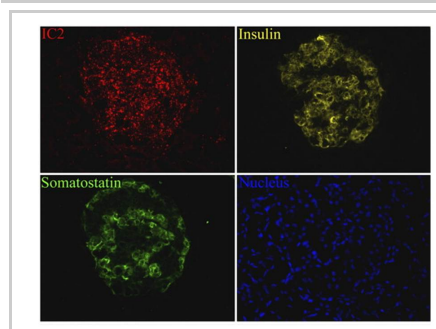
Antibody ID:	AB3274
Antigen:	Beta cell, IC2 (<i>No Gene ID associated</i>)
Type:	Monoclonal
Isotype:	IgM
Immunogen Source:	BB rat auto-reactive lymphocytes
Raised In:	Rat
Peptide:	<i>Not provided</i>
Source of Antigen:	Rat
Cross Reacts With:	Rat,Human
Affinity Purified:	Supernatant
Purity Details:	<i>Not provided</i>
Positive Control:	<i>Not provided</i>
Notes:	<i>Not provided</i>

Applications and Uses

Application	Concentration	Storage Buffer	Protocols and Description
IHC	1 µg/ml	PBS	Description: Staining was performed by first incubating coverslips with 1 µg/ml of IC2 antibody for 2 h at RT and then with Alexa Fluor 594-labeled goat anti-rat IgM (1:500 dilution, Invitrogen) Protocols:

Associated Images

Image 1



Description:

Immunostaining with IC2. Cryosections of human pancreas were stained with IC2 along with insulin and somatostatin or glucagon and observed under a fluorescence microscope.

Reference:

21747097

Repositories

Immunosigns

 Request via www.immunosigns.com/ website


Stock #: *Not provided*
Availability Notes: *Not provided*

Contact Information


Preferred Contact

Name	Carl-Henrik Brogren
Institution	University of Copenhagen
Phone	+45 2041 6249
Email	henrik@brogren.dk

Access Status

 This resource is publicly viewable.

Request this Resource

 Request from a repository

Primary contributor: [Antibody Core](#)

(Retired)


Co-contributed by:

- [Antibody Core \(USA\)](#)

Resource Tags


antibody, Beta cell, IC2 Monoclonal, Rat

 Login to edit tags

 Read more about tags

Resource History & Actions

Approved on
Last modified on Nov 07, 2011

 Login to edit or request an edit

Related resources

BCBC

No matching resources

Other Consortia

No matching resources

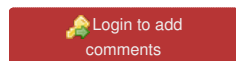
Data courtesy of [dkCOIN](#). Only public resources are displayed.

Associated Publications

Publication	Citation
21747097	Kavishwar A, Medarova Z, Moore A Unique sphingomyelin patches are targets of a beta-cell-specific antibody. (2011) <i>J Lipid Res</i> 52 : 1660-71 (Added February 09, 2012)
11574403	Moore A, Bonner-Weir S, Weissleder R Noninvasive in vivo measurement of beta-cell mass in mouse model of diabetes. (2001) <i>Diabetes</i> 50 : 2231-6 (Added September 29, 2011)
3522331	Brogren CH, Hirsch F, Wood P, Druet P, Poussier P Production and characterization of a monoclonal islet cell surface autoantibody from the BB rat. (1986) <i>Diabetologia</i> 29 : 330-3 (Added September 29, 2011)

Comments

There are no comments for this entry.



[Home](#) · [Your Account](#) · [News & Events](#) · [Resources](#) · [Policies & Guidelines](#) · [About Us](#) · [FAQ](#) · [Site Map](#)

© 2002-2015 Beta Cell Biology Consortium - All Rights Reserved. [Terms of usage and disclaimer.](#)

