

My Account

[Login](#)
[Create Account](#)

Resources

[View All \(813\)](#)
[Adenoviruses \(137\)](#)
[Antibodies \(175\)](#)
[Bioimages \(67\)](#)
[Genomics Studies \(145\)](#)
[mESC Lines \(68\)](#)
[Mouse Strains \(120\)](#)
[Miscellaneous \(46\)](#)
[Protocols \(55\)](#)
[Research Data \(4\)](#)
[Resource Tags \(389\)](#)
[Visualization \(9\)](#)

Research & Cores

[Core Facilities \(5\)](#)
[Research Highlights \(5\)](#)
[Research Networks](#)
[Research Objectives](#)

Information

[About the BCBC](#)
[BCBC Events](#)
[Branding & Logos](#)
[Career Opportunities](#)
[Health](#)
[NIH hESC Registry](#)
[Policies & Guidelines](#)
[Member Publications](#)
[Research Programs](#)
[Research Investigators](#)
[Member Directory](#)
[Tutorials](#)

Polyclonal Human CD-200 raised in Goat - Antibody RES4126**Antibody Information**

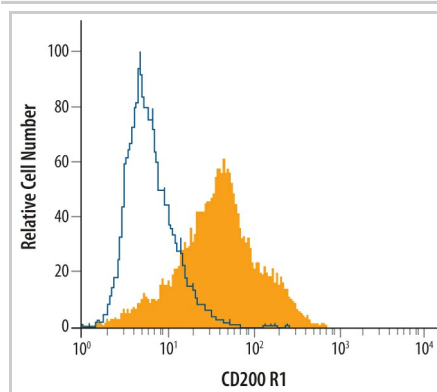
Antibody ID:	AB3114
Antigen:	CD-200 (NCBI Gene ID: 131450)
Type:	Polyclonal
Isotype:	Not Applicable
Immunogen Source:	Fusion Protein
Raised In:	Goat
Peptide:	CD-200 Gln31-Gly232
Source of Antigen:	Human
Cross Reacts With:	Mouse
Affinity Purified:	Affinity Purified
Purity Details:	<i>Not provided</i>
Positive Control:	human placenta
Notes:	Detected in immersion fixed paraffin-embedded sections of human placenta

Applications and Uses

Application	Concentration	Storage Buffer	Protocols and Description
WB	0.1mcg/ml	PBS with Trehalose	Description: <i>Not provided</i> Protocols:
Flow Cytometry	2.5mcg/10 ⁶ cells	PBS with Trehalose	Description: <i>Not provided</i> Protocols:

Associated Images

Image 1

**Description:**

Detection of CD200 R1 in Human Immature Dendritic Cells by Flow Cytometry.
Human immature dendritic cells differentiated from human peripheral blood mononuclear cell derived CD14⁺ cells treated with 20 ng/mL Recombinant Human IL-4 (Catalog # [204-IL](#)) and 50 ng/mL Recombinant Human GM-CSF (Catalog # [215-GM](#)) for 6-7 days were stained with Goat Anti-Human CD200 R1 Antigen Affinity-purified Polyclonal Antibody (Catalog # AF3414, filled histogram) or isotype control (Catalog # [AB-108-C](#), open histogram), followed by Donkey Anti-Goat IgG (H+L) Phycoerythrin (Catalog # [F0107](#)).


Reference:
R&D Systems

Repositories


R&D Systems

Stock #: AF3414

Access Status

 This resource is publicly viewable.


Request this Resource

 Request from a repository

Primary contributor: [CC U01](#)

Resource Tags

antibody, CD-200, Human, Polyclonal

 Login to edit tags

 Read more about tags

Resource History & Actions

Approved on
Last modified on Mar 12, 2013

 Login to edit or request an edit

Related resources**BCBC**

No matching resources

Other Consortia

No matching resources

Data courtesy of [dkCOIN](#). Only public resources are displayed.

[Request via www.rnssystem.com website](#)**Availability Notes:** *Not provided*

Contact Information

Preferred Contact

Name	Jean-Philippe Cartailier
Institution	Vanderbilt University Medical Center
Phone	615-322-6987
Email	jp.cartailier@vanderbilt.edu


Associated Publications

Publication Citation

[21804561](#) Kelly OG, Chan MY, Martinson LA, Kadoya K, Ostertag TM, Ross KG, Richardson M, Carpenter MK, D'Amour KA, Kroon E, Moorman M, Baetge EE, Bang AG Cell-surface markers for the isolation of pancreatic cell types derived from human embryonic stem cells. (2011) *Nat Biotechnol*29: 750-6 (Added September 29, 2011)

Comments

There are no comments for this entry.

 Login to add
comments

[Home](#) · [Your Account](#) · [News & Events](#) · [Resources](#) · [Policies & Guidelines](#) · [About Us](#) · [FAQ](#) · [Site Map](#)

© 2002-2015 Beta Cell Biology Consortium - All Rights Reserved. [Terms of usage and disclaimer.](#)

