

**My Account**[Login](#)[Create Account](#)**Resources**[View All \(813\)](#)[Adenoviruses \(137\)](#)[Antibodies \(175\)](#)[Bioimages \(67\)](#)[Genomics Studies \(145\)](#)[mESC Lines \(68\)](#)[Mouse Strains \(120\)](#)[Miscellaneous \(46\)](#)[Protocols \(55\)](#)[Research Data \(4\)](#)[Resource Tags \(389\)](#)[Visualization \(9\)](#)**Research & Cores**[Core Facilities \(5\)](#)[Research Highlights \(5\)](#)[Research Networks](#)[Research Objectives](#)**Information**[About the BCBC](#)[BCBC Events](#)[Branding & Logos](#)[Career Opportunities](#)[Health](#)[NIH hESC Registry](#)[Policies & Guidelines](#)[Member Publications](#)[Research Programs](#)[Research Investigators](#)[Member Directory](#)[Tutorials](#)

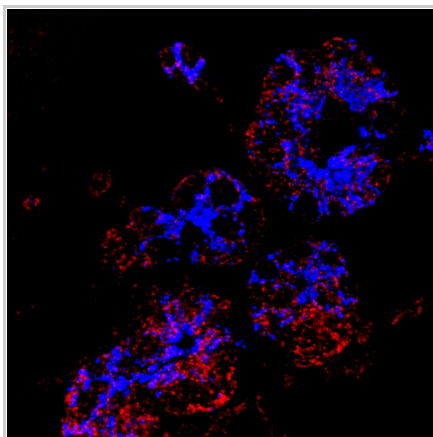
## Polyclonal Enterobacteria phage P1 Cre raised in Guinea Pig - Antibody RES4113

**Antibody Information**

<b>Antibody ID:</b>	AB3074
<b>Antigen:</b>	Cre (NCBI Gene ID: <a href="#">2777477</a> )
<b>Type:</b>	Polyclonal
<b>Isotype:</b>	Not Applicable
<b>Immunogen Source:</b>	Fusion Protein
<b>Raised In:</b>	Guinea Pig
<b>Peptide:</b>	Gst-Cre C-term
<b>Source of Antigen:</b>	Enterobacteria phage P1
<b>Cross Reacts With:</b>	Unknown
<b>Affinity Purified:</b>	Serum
<b>Purity Details:</b>	<i>Not provided</i>
<b>Positive Control:</b>	Ptf1a-Cre
<b>Notes:</b>	<i>Not provided</i>



**Applications and Uses**

Application	Concentration	Storage Buffer	Protocols and Description
IHC-Fr	1:2000	Serum	Description: 4% PFA fixed tissue Protocols: 1. <a href="#">IHC TSA stain</a>

**Associated Images****Image 1****Description:***Not provided***Reference:***Not provided***Image 2****Description:**

The tissue is from 2 different animals with one Ptf1a-CreER knock-in.

One animal we administered Tamoxifen and sacrificed that animal shortly afterwards to capture Cre in the nucleus (1). The Cre antibody is in Cy3, Cpa1 is in Cy5.

**Access Status**
 This resource is publicly viewable.
**Request this Resource**
 Request from a repository

 Primary contributor: [Antibody Core \(Retired\)](#)

Co-contributed by:

- [Antibody Core \(USA\)](#)

**Resource Tags**


antibody, Cre, Enterobacteria phage P1, Polyclonal

 Login to edit tags

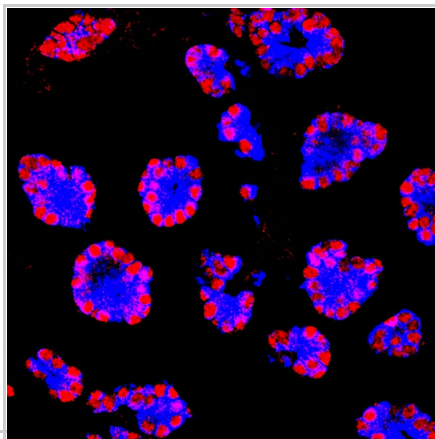
 [Read more about tags](#)
**Resource History & Actions**

Approved on

Last modified on May 07, 2013

 Login to edit or request an edit
**Related resources****BCBC**
*No matching resources*
**Other Consortia**
*No matching resources*

 Data courtesy of [dkCOIN](#). Only public resources are displayed.




The other animal we did not give tamoxifen and sacrificed the animal (Cre should be in the cytoplasm) (2)  
The Cre antibody is in Cy3, Cpa1 is in Cy5.

**Reference:**  
*Not provided*

## Repositories

### Antibody Core (USA)

 Request this resource

**Stock #:** *Not provided*  
**Availability Notes:** *Not provided*

### Antibody Core (Retired)

*Out of stock*

**Stock #:** *Not provided*  
**Availability Notes:** *Not provided*

## Contact Information

### Preferred Contact


<b>Name</b>	Jacob Hald
<b>Institution</b>	Hagedorn Research Institute
<b>Phone</b>	+45-30759185
<b>Email</b>	<a href="mailto:hald@hagedorn.dk">hald@hagedorn.dk</a>

## Associated Publications

*No publications associated*

## Comments

*There are no comments for this entry.*

 Login to add comments

