

My Account

[Login](#)
[Create Account](#)

Resources

[View All \(813\)](#)
[Adenoviruses \(137\)](#)
[Antibodies \(175\)](#)
[Bioimages \(67\)](#)
[Genomics Studies \(145\)](#)
[mESC Lines \(68\)](#)
[Mouse Strains \(120\)](#)
[Miscellaneous \(46\)](#)
[Protocols \(55\)](#)
[Research Data \(4\)](#)
[Resource Tags \(389\)](#)
[Visualization \(9\)](#)

Research & Cores

[Core Facilities \(5\)](#)
[Research Highlights \(5\)](#)
[Research Networks](#)
[Research Objectives](#)

Information

[About the BCBC](#)
[BCBC Events](#)
[Branding & Logos](#)
[Career Opportunities](#)
[Health](#)
[NIH hESC Registry](#)
[Policies & Guidelines](#)
[Member Publications](#)
[Research Programs](#)
[Research Investigators](#)
[Member Directory](#)
[Tutorials](#)

Polyclonal Human Lrp11 raised in Rabbit - Antibody RES4048**Antibody Information**

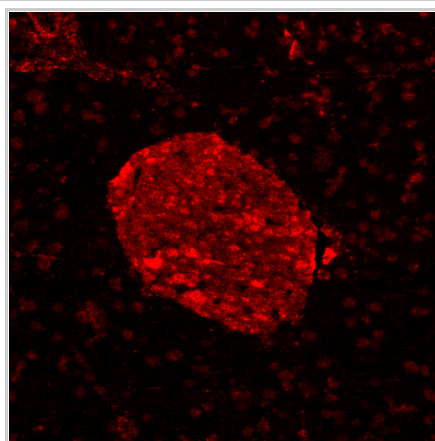
Antibody ID:	AB3034
Antigen:	Lrp11 (NCBI Gene ID: 84918)
Type:	Polyclonal
Isotype:	Not Applicable
Immunogen Source:	Peptide
Raised In:	Rabbit
Peptide:	KLH-LRP11 (aa70-88)
Source of Antigen:	Human
Cross Reacts With:	Mouse, Human
Affinity Purified:	Serum
Purity Details:	<i>Not provided</i>
Positive Control:	Adult human pancreas
Notes:	Works best on mouse tissue

Applications and Uses

Application	Concentration	Storage Buffer	Protocols and Description
IHC	1:2000, with TSA	serum	Description: <i>Not provided</i> Protocols: 1. Immunofluorescent Staining

Associated Images

Image 1

**Description:**

Adult mouse pancreas stained with AB3034

Reference:

Not provided

Repositories**Antibody Core (Retired)**

Out of stock **Stock #:** 2468B
Availability Notes: *Not provided*


Antibody Core (USA)

[Request this resource](#) **Stock #:** 2468B
Availability Notes: *Not provided*

Contact Information

Preferred Contact

Access Status

 This resource is publicly viewable.

Request this Resource

[Request from a repository](#)

Primary contributor: [Antibody Core \(Retired\)](#)

Co-contributed by:
• [Antibody Core \(USA\)](#)

Resource Tags

antibody, Human, Lrp11, Polyclonal

[Login to edit tags](#)

[Read more about tags](#)

Resource History & Actions

Approved on
Last modified on Feb 06, 2012

[Login to edit or request an edit](#)

Related resources**BCBC**

No matching resources

Other Consortia

No matching resources

Data courtesy of [dkCOIN](#). Only public resources are displayed.


Name	Ole Madsen
Institution	Hagedorn Research Institute
Phone	+45 4443 9197
Email	odm@hagedorn.dk
Primary Lab Contact	
Name	Jacob Hald
Institution	Hagedorn Research Institute
Phone	+45-30759185
Email	hald@hagedorn.dk

Associated Publications

Publication	Citation
21947380	Hald J, Galbo T, Rescan C, Radzikowski L, Sprinkel AE, Heimberg H, Ahnfelt-Rønne J, Jensen J, Scharfmann R, Gradwohl G, Kaestner KH, Stoeckert C, Jensen JN, Madsen OD Pancreatic islet and progenitor cell surface markers with cell sorting potential . (2012) <i>Diabetologia</i> 55: 154-65 (Added December 19, 2012)

Comments

There are no comments for this entry.

 Login to add
comments

[Home](#) · [Your Account](#) · [News & Events](#) · [Resources](#) · [Policies & Guidelines](#) · [About Us](#) · [FAQ](#) · [Site Map](#)

© 2002-2015 Beta Cell Biology Consortium - All Rights Reserved. [Terms of usage and disclaimer](#).

