

## My Account

Login  
Create Account

## Resources

View All (813)  
Adenoviruses (137)  
Antibodies (175)  
Bioimages (67)  
Genomics Studies (145)  
mESC Lines (68)  
Mouse Strains (120)  
Miscellaneous (46)  
Protocols (55)  
Research Data (4)  
Resource Tags (389)  
Visualization (9)

## Research &amp; Cores

Core Facilities (5)  
Research Highlights (5)  
Research Networks  
Research Objectives

## Information

About the BCBC  
BCBC Events  
Branding & Logos  
Career Opportunities  
Health  
NIH hESC Registry  
Policies & Guidelines  
Member Publications  
Research Programs  
Research Investigators  
Member Directory  
Tutorials

## Polyclonal Mouse Sez6l2 raised in Rabbit - Antibody RES4047

### Antibody Information

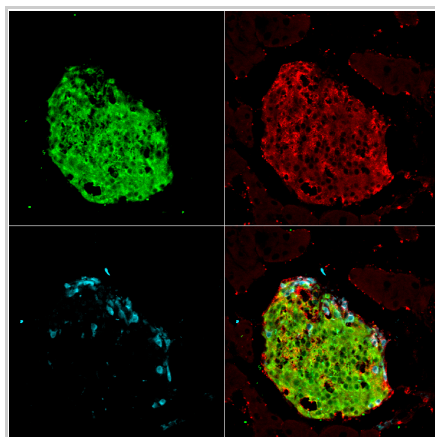
Antibody ID:	AB3014
Antigen:	Sez6l2 (NCBI Gene ID: <a href="#">233878</a> )
Type:	Polyclonal
Isotype:	Not Applicable
Immunogen Source:	Peptide
Raised In:	Rabbit
Peptide:	KLH-Sez6l2 (aa491-507)
Source of Antigen:	Mouse
Cross Reacts With:	Mouse, Human
Affinity Purified:	Serum
Purity Details:	<i>Not provided</i>
Positive Control:	Adult human pancreas
Notes:	Best for human tissue. Surface marker. Cell type: Mature endocrine cells.

### Applications and Uses

Application	Concentration	Storage Buffer	Protocols and Description
IHC	1:2000	PBS	Description: <i>Not provided</i> Protocols: 1. <a href="#">Immunofluorescent Staining</a>

### Associated Images

## Image 1



## Description:

Human cryo pancreas. Stained for Sez6l2 Rb2470B 1:2000 with TSA-cy3 (red) and ins i green and glu in blu. Sez6l2 stain islet.

## Reference:

*Not provided*

### Repositories

## Antibody Core (Retired)

*Out of stock* Stock #: 2470B  
Availability Notes: Available in 25 microliter aliquots


## Antibody Core (USA)

 Stock #: 2470B  
Availability Notes: *Not provided*

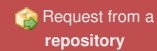
### Contact Information

Preferred Contact

### Access Status

 This resource is publicly viewable.

### Request this Resource



Primary contributor: [Antibody Core](#)


(Retired)


Co-contributed by:

- [Antibody Core \(USA\)](#)

### Resource Tags

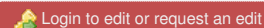
antibody, Mouse, Polyclonal, Sez6l2





### Resource History & Actions

Approved on  
Last modified on Sep 11, 2012



### Related resources

## BCBC

*No matching resources*

## Other Consortia

*No matching resources*

Data courtesy of [dkCOIN](#). Only public resources are displayed.

<b>Name</b>	Ole Madsen
<b>Institution</b>	Hagedorn Research Institute
<b>Phone</b>	+45 4443 9197
<b>Email</b>	<a href="mailto:odm@hagedorn.dk">odm@hagedorn.dk</a>

**Primary Lab Contact**


<b>Name</b>	Jacob Hald
<b>Institution</b>	Hagedorn Research Institute
<b>Phone</b>	+45-30759185
<b>Email</b>	<a href="mailto:hald@hagedorn.dk">hald@hagedorn.dk</a>

**Associated Publications**

Publication	Citation
<a href="#">21947380</a>	Hald J, Galbo T, Rescan C, Radzikowski L, Sprinkel AE, Heimberg H, Ahnfelt-Rønne J, Jensen J, Scharfmann R, Gradwohl G, Kaestner KH, Stoeckert C, Jensen JN, Madsen OD <a href="#">Pancreatic islet and progenitor cell surface markers with cell sorting potential</a> . (2012) <i>Diabetologia</i> <b>55</b> : 154-65 (Added December 19, 2012)

**Comments**

There are no comments for this entry.

 Login to add comments

[Home](#) · [Your Account](#) · [News & Events](#) · [Resources](#) · [Policies & Guidelines](#) · [About Us](#) · [FAQ](#) · [Site Map](#)

© 2002-2015 Beta Cell Biology Consortium - All Rights Reserved. [Terms of usage and disclaimer](#).

