

**My Account**

Login  
Create Account

**Resources**

View All (813)  
Adenoviruses (137)  
Antibodies (175)  
Bioimages (67)  
Genomics Studies (145)  
mESC Lines (68)  
Mouse Strains (120)  
Miscellaneous (46)  
Protocols (55)  
Research Data (4)  
Resource Tags (389)  
Visualization (9)

**Research & Cores**

Core Facilities (5)  
Research Highlights (5)  
Research Networks  
Research Objectives

**Information**

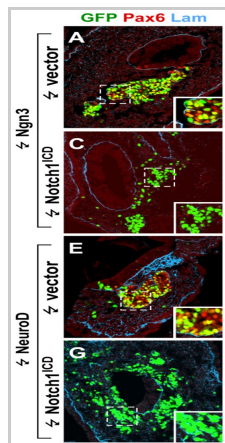
About the BCBC  
BCBC Events  
Branding & Logos  
Career Opportunities  
Health  
NIH hESC Registry  
Policies & Guidelines  
Member Publications  
Research Programs  
Research Investigators  
Member Directory  
Tutorials

**Polyclonal Mouse Laminin raised in Rabbit - Antibody RES347****Antibody Information**

<b>Antibody ID:</b>	AB2293
<b>Antigen:</b>	Laminin (NCBI Gene ID: <a href="#">16772</a> )
<b>Type:</b>	Polyclonal
<b>Isotype:</b>	Not Applicable
<b>Immunogen Source:</b>	Purified Protein
<b>Raised In:</b>	Rabbit
<b>Peptide:</b>	<i>Not provided</i>
<b>Source of Antigen:</b>	Mouse
<b>Cross Reacts With:</b>	Mouse, Rat, Human
<b>Affinity Purified:</b>	Affinity Purified
<b>Purity Details:</b>	<i>Not provided</i>
<b>Positive Control:</b>	<i>Not provided</i>
<b>Notes:</b>	Formalin fixed tissue. Cryosections.

**Applications and Uses**

Application	Concentration	Storage Buffer	Protocols and Description
<i>None provided</i>			

**Associated Images****Image 1****Description:**

Confocal sections of chicken embryonic pancreata 52 hours after electroporation with Ngn3 (A), Ngn3 and Notch1<sup>ICD</sup> (C), NeuroD (E), or NeuroD and Notch1<sup>ICD</sup> (G) subjected to immunohistochemical stainings against Pax6 (red) and laminin (blue) (A, C, E, G).

**Reference:**

17555568

**Repositories****Sigma**

 Request via [www.sigma.com](http://www.sigma.com) website


**Stock #:** L9393

**Availability Notes:** *Not provided*


**Contact Information****Preferred Contact**

<b>Name</b>	Sigma-Aldrich Corp.
<b>Institution</b>	<i>Not provided</i>
<b>Phone</b>	314-771-5765
<b>Email</b>	<a href="mailto:cssorders@sial.com">cssorders@sial.com</a>

**Access Status**

 This resource is publicly viewable.

**Request this Resource**

 Request from a repository

Primary contributor: [Antibody Core](#)


(Retired)


Co-contributed by:

- [Antibody Core \(USA\)](#)

**Resource Tags**

antibody, Laminin, Mouse, Polyclonal


 Login to edit tags

 Read more about tags

**Resource History & Actions**

Approved on

Last modified on May 07, 2013

 Login to edit or request an edit

**Related resources****BCBC**

*No matching resources*

**Other Consortia**

*No matching resources*


Data courtesy of [dkCOIN](#). Only public resources are displayed.

## Associated Publications

Publication	Citation
<a href="#">17555568</a>	Ahnfelt-Rønne J, Hald J, Bødker A, Yassin H, Serup P, Hecksher-Sørensen J <a href="#">Preservation of proliferating pancreatic progenitor cells by Delta-Notch signaling in the embryonic chicken pancreas.</a> (2007) <i>BMC Dev Biol</i> 7: 63 (Added December 18, 2009)

## Comments

*There are no comments for this entry.*

 [Login to add comments](#)

[Home](#) · [Your Account](#) · [News & Events](#) · [Resources](#) · [Policies & Guidelines](#) · [About Us](#) · [FAQ](#) · [Site Map](#)

© 2002-2015 Beta Cell Biology Consortium - All Rights Reserved. [Terms of usage and disclaimer.](#)

