

**My Account**

[Login](#)  
[Create Account](#)

**Resources**

[View All \(813\)](#)  
[Adenoviruses \(137\)](#)  
[Antibodies \(175\)](#)  
[Bioimages \(67\)](#)  
[Genomics Studies \(145\)](#)  
[mESC Lines \(68\)](#)  
[Mouse Strains \(120\)](#)  
[Miscellaneous \(46\)](#)  
[Protocols \(55\)](#)  
[Research Data \(4\)](#)  
[Resource Tags \(389\)](#)  
[Visualization \(9\)](#)

**Research & Cores**

[Core Facilities \(5\)](#)  
[Research Highlights \(5\)](#)  
[Research Networks](#)  
[Research Objectives](#)

**Information**

[About the BCBC](#)  
[BCBC Events](#)  
[Branding & Logos](#)  
[Career Opportunities](#)  
[Health](#)  
[NIH hESC Registry](#)  
[Policies & Guidelines](#)  
[Member Publications](#)  
[Research Programs](#)  
[Research Investigators](#)  
[Member Directory](#)  
[Tutorials](#)

**Polyclonal Human T (Brachyury) raised in Goat - Antibody RES346****Antibody Information**

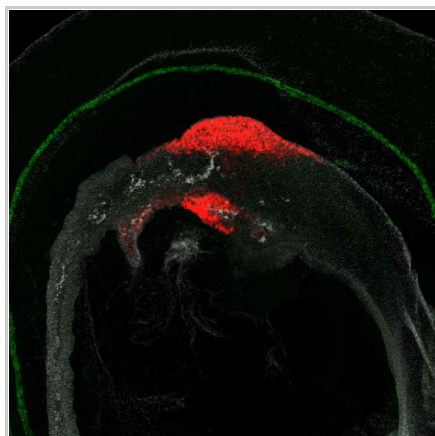
Antibody ID:	AB2253
Antigen:	T (Brachyury) (NCBI Gene ID: <a href="#">6862</a> )
Type:	Polyclonal
Isotype:	Not Applicable
Immunogen Source:	Peptide
Raised In:	Goat
Peptide:	Brachyury aa 2-202
Source of Antigen:	Human
Cross Reacts With:	Mouse, Human
Affinity Purified:	Affinity Purified
Purity Details:	<i>Not provided</i>
Positive Control:	<i>Not provided</i>
Notes:	Suitable for wholmount immunofluorescent stainings on mouse tissue

**Applications and Uses**

Application	Concentration	Storage Buffer	Protocols and Description
IHC	1:1000	<i>Not provided</i>	Description: <i>Not provided</i> Protocols: 1. <a href="#">An improved method for three-dimensional reconstruction of protein expression patterns in intact mouse and chicken embryos and organs. J Histochem Cytochem 55, 925-30.</a>

**Associated Images**

Image 1



**Description:**  
E9 mouse embryo stained for T (Brachyury) (Green), Pdx1 (red) and ecadherin (grey). T labels the notochord.

**Reference:**  
17881611

**Repositories****R&D Systems**


[Request via \[www.rndsystems.com\]\(http://www.rndsystems.com\) website](#)

**Stock #:** AF2085  
**Availability Notes:** *Not provided*

**Contact Information****Preferred Contact**

**Name** R&D Systems

**Access Status**

 This resource is publicly viewable.

**Request this Resource**

[Request from a repository](#)

Primary contributor: [Antibody Core \(Retired\)](#)  
Co-contributed by:  
• [Antibody Core \(USA\)](#)

**Resource Tags**

antibody, endoderm, Human, Polyclonal, T (Brachyury)

[Login to edit tags](#)

[Read more about tags](#)

**Resource History & Actions**

Approved on  
Last modified on Nov 09, 2010

[Login to edit or request an edit](#)

**Related resources****BCBC**

*No matching resources*

**Other Consortia**

*No matching resources*

Data courtesy of [dkCOIN](#). Only public resources are displayed.

<b>Institution</b>	<i>Not provided</i>
<b>Phone</b>	1-800-343-7475
<b>Email</b>	<a href="mailto:info@bio-techne.com">info@bio-techne.com</a>

### Associated Publications

Publication	Citation
<a href="#">17881611</a>	Jørgensen MC, Ahnfelt-Rønne J, Hald J, Madsen OD, Serup P, Hecksher-Sørensen J <a href="#">An illustrated review of early pancreas development in the mouse.</a> (2007) <i>Endocr Rev</i> <b>28</b> : 685-705 (Added December 18, 2009)

### Comments

*There are no comments for this entry.*

