

**My Account**[Login](#)[Create Account](#)**Resources**[View All \(813\)](#)[Adenoviruses \(137\)](#)[Antibodies \(175\)](#)[Bioimages \(67\)](#)[Genomics Studies \(145\)](#)[mESC Lines \(68\)](#)[Mouse Strains \(120\)](#)[Miscellaneous \(46\)](#)[Protocols \(55\)](#)[Research Data \(4\)](#)[Resource Tags \(389\)](#)[Visualization \(9\)](#)**Research & Cores**[Core Facilities \(5\)](#)[Research Highlights \(5\)](#)[Research Networks](#)[Research Objectives](#)**Information**[About the BCBC](#)[BCBC Events](#)[Branding & Logos](#)[Career Opportunities](#)[Health](#)[NIH hESC Registry](#)[Policies & Guidelines](#)[Member Publications](#)[Research Programs](#)[Research Investigators](#)[Member Directory](#)[Tutorials](#)

## Monoclonal Human Pancreatic endocrine cells raised in Mouse - Antibody RES341

**Antibody Information**

<b>Antibody ID:</b>	AB2196
<b>Antigen:</b>	Pancreatic endocrine cells ( <i>No Gene ID associated</i> )
<b>Type:</b>	Monoclonal
<b>Isotype:</b>	IgG1
<b>Immunogen Source:</b>	Whole cells
<b>Raised In:</b>	Mouse
<b>Peptide:</b>	<i>Not provided</i>
<b>Source of Antigen:</b>	Human
<b>Cross Reacts With:</b>	Human
<b>Affinity Purified:</b>	Supernatant
<b>Purity Details:</b>	<i>Not provided</i>
<b>Positive Control:</b>	Acetone-fixed frozen tissue sections of adult human pancreas.

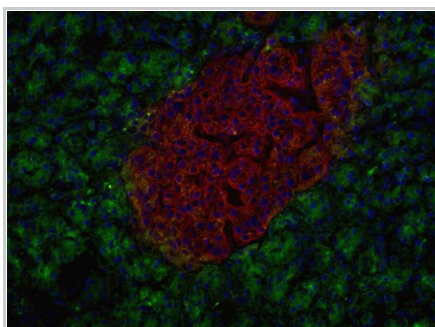
**Notes:** The monoclonal antibody HPI2 is derived from hybridoma HIC1-2B4. The monoclonal antibody selectively reacts with a cell surface molecule on human endocrine cells in pancreas. Mice were immunized with enriched islets. These cell preparations contain low levels of contaminating exocrine and ductal cells. These antibodies are currently being characterized. As such, the information included here should be considered preliminary data. It is requested that users of this antibody share data with provider as a mechanism to rapidly assist in antibody characterization.

**Applications and Uses**



Application	Concentration	Storage Buffer	Protocols and Description
FACS	Undiluted	Tissue culture media	Description: <i>Not provided</i> Protocols: 1. <a href="#">Flow Cytometry: Labeling of Cell Surface Molecules on Human Cells with Mouse Monoclonal Antibodies</a>
IHC-AF	Undiluted	Tissue culture media	Description: <i>Not provided</i> Protocols: 1. <a href="#">Immunofluorescence Detection of Mouse Monoclonal Antibodies on Sections of Acetone-Fixed Frozen Human Tissue</a>

**Associated Images**

Image 1

**Description:**

Human pancreas frozen section illustrating detection of endocrine cells with the monoclonal antibody HPI2 (hybridoma HIC1-2B4). HPI2 was detected using a polyclonal Cy3-conjugated anti-mouse IgG (red). The figure also demonstrates HPx2 reactivity with exocrine cells. The HPx2 monoclonal antibody was detected using a polyclonal FITC-conjugated anti-mouse IgM (green). Cell

**Access Status**
 This resource is publicly viewable.
**Request this Resource**
 Request from a repository
Primary contributor: [Grompe Lab](#)

Co-contributed by:

- [Streeter Lab](#)

**Resource Tags**


antibody, FACS, Human, Monoclonal, Pancreatic endocrine cells

 Login to edit tags

 Read more about tags
**Resource History & Actions**

Approved on

Last modified on Oct 18, 2007

 Login to edit or request an edit
**Related resources****BCBC**

No matching resources

**Other Consortia**

No matching resources

Data courtesy of [dkCOIN](#). Only public resources are displayed.

nuclei were labeled with  
Hoeschst 33342 (blue).

**Reference:**  
*Not provided*

---

## Repositories

### Streeter Lab

*Out of stock*

**Stock #:** *Not provided*

**Availability Notes:** [Available at OHSU, Stock #1038E](#)

---

## Contact Information

### Preferred Contact

<b>Name</b>	OHSU
<b>Institution</b>	<i>Not provided</i>
<b>Phone</b>	(503) 494-8200
<b>Email</b>	<a href="mailto:techmgmt@ohsu.edu">techmgmt@ohsu.edu</a>

---

## Associated Publications

*No publications associated*

## Comments

*There are no comments for this entry.*

 [Login to add comments](#)

[Home](#) · [Your Account](#) · [News & Events](#) · [Resources](#) · [Policies & Guidelines](#) · [About Us](#) · [FAQ](#) · [Site Map](#)

© 2002-2015 Beta Cell Biology Consortium - All Rights Reserved. [Terms of usage and disclaimer.](#)

