

**My Account**

[Login](#)  
[Create Account](#)

**Resources**

[View All \(813\)](#)  
[Adenoviruses \(137\)](#)  
[Antibodies \(175\)](#)  
[Bioimages \(67\)](#)  
[Genomics Studies \(145\)](#)  
[mESC Lines \(68\)](#)  
[Mouse Strains \(120\)](#)  
[Miscellaneous \(46\)](#)  
[Protocols \(55\)](#)  
[Research Data \(4\)](#)  
[Resource Tags \(389\)](#)  
[Visualization \(9\)](#)

**Research & Cores**

[Core Facilities \(5\)](#)  
[Research Highlights \(5\)](#)  
[Research Networks](#)  
[Research Objectives](#)

**Information**

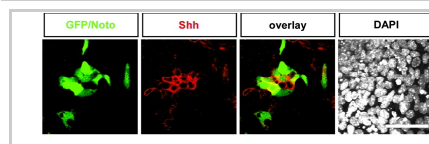
[About the BCBC](#)  
[BCBC Events](#)  
[Branding & Logos](#)  
[Career Opportunities](#)  
[Health](#)  
[NIH hESC Registry](#)  
[Policies & Guidelines](#)  
[Member Publications](#)  
[Research Programs](#)  
[Research Investigators](#)  
[Member Directory](#)  
[Tutorials](#)

**Polyclonal Mouse Shh raised in Goat - Antibody RES332****Antibody Information**

<b>Antibody ID:</b>	AB2133
<b>Antigen:</b>	Shh (NCBI Gene ID: <a href="#">20423</a> )
<b>Type:</b>	Polyclonal
<b>Isotype:</b>	Not Applicable
<b>Immunogen Source:</b>	Fusion Protein
<b>Raised In:</b>	Goat
<b>Peptide:</b>	6Xhis-rmShh C-term (aa199-437) and N-term (aa25-198)
<b>Source of Antigen:</b>	Mouse
<b>Cross Reacts With:</b>	Mouse
<b>Affinity Purified:</b>	Affinity Purified
<b>Purity Details:</b>	Absorbed with Shh N-term affinity column and purified with C-term affinity column
<b>Positive Control:</b>	mouse embryo e10.0
<b>Notes:</b>	<i>Not provided</i>

**Applications and Uses**

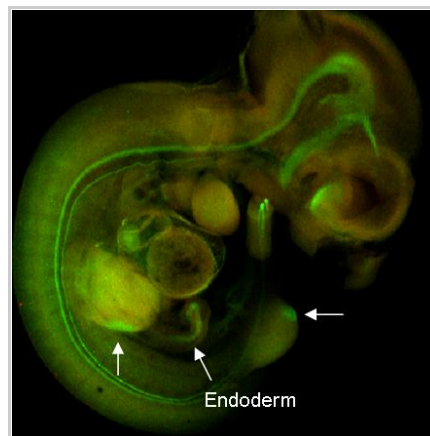
Application	Concentration	Storage Buffer	Protocols and Description
IHC	1:100	<i>Not provided</i>	Description: for whole mount. Protocols:
IHC-CC	1-100	<i>Not provided</i>	Description: on fixed cells Protocols:

**Associated Images****Image 1****Description:**

Immunocytochemistry of Shh (red), and GFP (green) in Noto<sup>Gfp+</sup> cells was performed at day 5 of the differentiation process. Cell nuclei were stained with DAPI (white). Scale bar=50 μm.

**Reference:**

21351873


**Image 2****Description:**

Shh wholemount immunofluorescence e10.0. Antibody diluted 1:100 (1?g/ml)


**Reference:**

Jonas Ahnfelt-Rønne,  
Hagedorn Research Institute

**Access Status**

 This resource is publicly viewable.

**Request this Resource**

 Request from a repository

Primary contributor: [Antibody Core](#)


(Retired)


Co-contributed by:

- [Antibody Core \(USA\)](#)

**Resource Tags**

antibody, Mouse, Polyclonal, Shh


 Login to edit tags

 Read more about tags

**Resource History & Actions**

Approved on

Last modified on Apr 11, 2007

 Login to edit or request an edit

**Related resources****BCBC**

*No matching resources*

**Other Consortia**

*No matching resources*

Data courtesy of [dkCOIN](#). Only public resources are displayed.

---

## Repositories

### R&D Systems

 Request via [www.rndsystems.com](http://www.rndsystems.com) website

**Stock #:** AF445

**Availability Notes:** *Not provided*

---

## Contact Information

### Preferred Contact

**Name** Jonas Ahnfelt-Ronne

**Institution** *Not provided*

**Phone** *Not provided*

**Email** [jonr@hagedorn.dk](mailto:jonr@hagedorn.dk)

---

## Associated Publications


### Publication Citation

[21351873](#) Winzi MK, Hyttel P, Dale JK, Serup P [Isolation and characterization of \*node/notochord-like cells from mouse embryonic stem cells\*, \(2011\) \*Stem Cells Dev\* 20: 1817-27](#) (Added May 13, 2013)

---

## Comments

*There are no comments for this entry.*

 Login to add comments

[Home](#) · [Your Account](#) · [News & Events](#) · [Resources](#) · [Policies & Guidelines](#) · [About Us](#) · [FAQ](#) · [Site Map](#)

© 2002-2015 Beta Cell Biology Consortium - All Rights Reserved. [Terms of usage and disclaimer](#).

