

My Account[Login](#)[Create Account](#)**Resources**[View All \(813\)](#)[Adenoviruses \(137\)](#)[Antibodies \(175\)](#)[Bioimages \(67\)](#)[Genomics Studies \(145\)](#)[mESC Lines \(68\)](#)[Mouse Strains \(120\)](#)[Miscellaneous \(46\)](#)[Protocols \(55\)](#)[Research Data \(4\)](#)[Resource Tags \(389\)](#)[Visualization \(9\)](#)**Research & Cores**[Core Facilities \(5\)](#)[Research Highlights \(5\)](#)[Research Networks](#)[Research Objectives](#)**Information**[About the BCBC](#)[BCBC Events](#)[Branding & Logos](#)[Career Opportunities](#)[Health](#)[NIH hESC Registry](#)[Policies & Guidelines](#)[Member Publications](#)[Research Programs](#)[Research Investigators](#)[Member Directory](#)[Tutorials](#)

Monoclonal Human Pancreatic endocrine cells raised in Mouse - Antibody RES326

Antibody Information

Antibody ID:	AB2115
Antigen:	Pancreatic endocrine cells (<i>No Gene ID associated</i>)
Type:	Monoclonal
Isotype:	IgG1
Immunogen Source:	Whole cells
Raised In:	Mouse
Peptide:	<i>Not provided</i>
Source of Antigen:	Human
Cross Reacts With:	Human
Affinity Purified:	Supernatant
Purity Details:	<i>Not provided</i>
Positive Control:	Acetone-fixed frozen tissue sections of adult human pancreas.

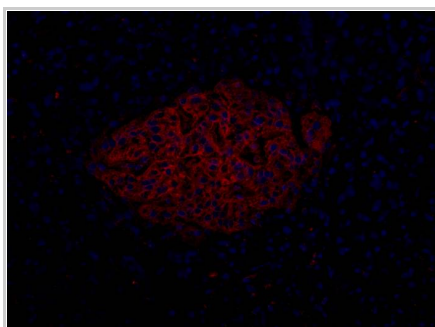
Notes: The monoclonal antibody HPi1 is derived from hybridoma HIC0-4F9. The monoclonal antibody selectively reacts with a cell surface molecule on human endocrine cells in pancreas. Mice were immunized with enriched islets. These cell preparations contain low levels of contaminating exocrine and ductal cells. These antibodies are currently being characterized. As such, the information included here should be considered preliminary data. It is requested that users of this antibody share data with provider as a mechanism to rapidly assist in antibody characterization.

Applications and Uses

Application	Concentration	Storage Buffer	Protocols and Description
FACS	Undiluted	Tissue culture media	Description: <i>Not provided</i> Protocols: 1. Flow Cytometry: Labeling of Cell Surface Molecules on Human Cells with Mouse Monoclonal Antibodies
IHC-AF	Undiluted	Tissue culture media	Description: <i>Not provided</i> Protocols: 1. Immunofluorescence Detection of Mouse Monoclonal Antibodies on Sections of Acetone-Fixed Frozen Human Tissue

Associated Images

Image 1


**Description:**

Human pancreas frozen section illustrating HPi1 reactivity with endocrine cells. The monoclonal antibody was detected using a polyclonal Cy3-conjugated anti-mouse immunoglobulin (red). Cell nuclei were labeled with Hoeschst 33342 (blue).


Reference:

Not provided

Access Status

 This resource is publicly viewable.

Request this Resource

 Request from a repository


Primary contributor: [Grompe Lab](#)

Co-contributed by:

- [Streeter Lab](#)

Resource Tags

antibody, FACS, Human, Monoclonal, Pancreatic endocrine cells


 Login to edit tags

 Read more about tags

Resource History & Actions

Approved on

Last modified on Jul 14, 2006

 Login to edit or request an edit

Related resources**BCBC**

No matching resources

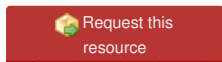
Other Consortia

No matching resources

Data courtesy of [dkCOIN](#). Only public resources are displayed.

Repositories

Streeter Lab



Stock #: HPI1

Availability Notes: [Available at OHSU, Stock #1038A](#)

Contact Information

Preferred Contact

Name	Markus Grompe
Institution	Oregon Health & Science University
Phone	503-494-6888
Email	gropem@ohsu.edu

Primary Lab Contact

Name	<i>Not provided</i>
Institution	<i>Not provided</i>
Phone	<i>Not provided</i>
Email	<i>Not provided</i>

Associated Publications

No publications associated

Comments

There are no comments for this entry.

