

**My Account**

Login  
Create Account

**Resources**

View All (813)  
Adenoviruses (137)  
Antibodies (175)  
Bioimages (67)  
Genomics Studies (145)  
mESC Lines (68)  
Mouse Strains (120)  
Miscellaneous (46)  
Protocols (55)  
Research Data (4)  
Resource Tags (389)  
Visualization (9)

**Research & Cores**

Core Facilities (5)  
Research Highlights (5)  
Research Networks  
Research Objectives

**Information**

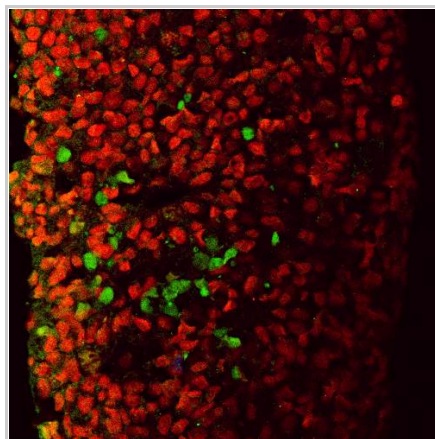
About the BCBC  
BCBC Events  
Branding & Logos  
Career Opportunities  
Health  
NIH hESC Registry  
Policies & Guidelines  
Member Publications  
Research Programs  
Research Investigators  
Member Directory  
Tutorials

**Polyclonal Human Sox17 raised in Rabbit - Antibody RES324****Antibody Information**

<b>Antibody ID:</b>	AB2112
<b>Antigen:</b>	Sox17 (NCBI Gene ID: <a href="#">64321</a> )
<b>Type:</b>	Polyclonal
<b>Isotype:</b>	Not Applicable
<b>Immunogen Source:</b>	cDNA
<b>Raised In:</b>	Rabbit
<b>Peptide:</b>	<i>Not provided</i>
<b>Source of Antigen:</b>	Human
<b>Cross Reacts With:</b>	Human
<b>Affinity Purified:</b>	Serum
<b>Purity Details:</b>	<i>Not provided</i>
<b>Positive Control:</b>	hES cells
<b>Notes:</b>	Donated by Anne Bang, CyThera Inc.

**Applications and Uses**

Application	Concentration	Storage Buffer	Protocols and Description
<i>None provided</i>			

**Associated Images****Image 1**

**Description:**  
*Not provided*

**Reference:**  
*Not provided*

**Repositories**


BCBC members may [Login](#) to request this resource.

BCBC members may [Login](#) to request this resource.


**Contact Information****Preferred Contact**

<b>Name</b>	Michael Ray
<b>Institution</b>	Vanderbilt University
<b>Phone</b>	(615)343-8258
<b>Email</b>	<a href="mailto:michael.ray@vanderbilt.edu">michael.ray@vanderbilt.edu</a>

**Associated Publications****Access Status**

 This resource is publicly viewable.


**Request this Resource**


 Request from a repository

Primary contributor: [Antibody Core \(Retired\)](#)  
Co-contributed by:  
• [Antibody Core \(USA\)](#)

**Resource Tags**

AbCore, antibody, Human, Polyclonal, Sox17

 Login to edit tags

 Read more about tags

**Resource History & Actions**

Approved on  
Last modified on Apr 07, 2015

 Login to edit or request an edit

**Related resources****BCBC**

*No matching resources*

**Other Consortia**

*No matching resources*


Data courtesy of [dkCOIN](#). Only public resources are displayed.

No publications associated

## Comments

---

There are no comments for this entry.

 Login to add  
comments

[Home](#) · [Your Account](#) · [News & Events](#) · [Resources](#) · [Policies & Guidelines](#) · [About Us](#) · [FAQ](#) · [Site Map](#)

© 2002-2015 Beta Cell Biology Consortium - All Rights Reserved. [Terms of usage and disclaimer](#).

