

My Account

[Login](#)
[Create Account](#)

Resources

[View All \(813\)](#)
[Adenoviruses \(137\)](#)
[Antibodies \(175\)](#)
[Bioimages \(67\)](#)
[Genomics Studies \(145\)](#)
[mESC Lines \(68\)](#)
[Mouse Strains \(120\)](#)
[Miscellaneous \(46\)](#)
[Protocols \(55\)](#)
[Research Data \(4\)](#)
[Resource Tags \(389\)](#)
[Visualization \(9\)](#)

Research & Cores

[Core Facilities \(5\)](#)
[Research Highlights \(5\)](#)
[Research Networks](#)
[Research Objectives](#)

Information

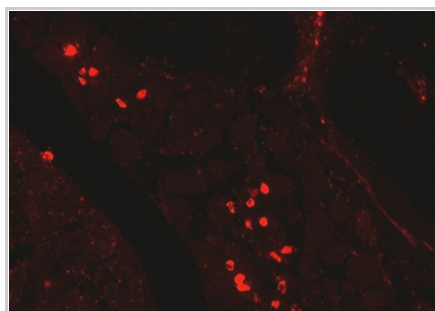
[About the BCBC](#)
[BCBC Events](#)
[Branding & Logos](#)
[Career Opportunities](#)
[Health](#)
[NIH hESC Registry](#)
[Policies & Guidelines](#)
[Member Publications](#)
[Research Programs](#)
[Research Investigators](#)
[Member Directory](#)
[Tutorials](#)

Polyclonal Human ghrelin raised in Rabbit - Antibody RES314**Antibody Information**

Antibody ID:	AB2029
Antigen:	ghrelin (NCBI Gene ID: 51738)
Type:	Polyclonal
Isotype:	Not Applicable
Immunogen Source:	Ghrelin without fatty acid chain
Raised In:	Rabbit
Peptide:	<i>Not provided</i>
Source of Antigen:	Human
Cross Reacts With:	Mouse, Human
Affinity Purified:	Serum
Purity Details:	<i>Not provided</i>
Positive Control:	Mouse embryo E15
Notes:	<i>Not provided</i>

Applications and Uses

Application	Concentration	Storage Buffer	Protocols and Description
IHC-AIFr	1:500	<i>Not provided</i>	Description: <i>Not provided</i> Protocols: 1. IHC TSA staining protocol
RIA	1:4800	<i>Not provided</i>	Description: <i>Not provided</i> Protocols: <i>Not provided</i>

Associated Images**Image 1**

Description:
IHC staining of whole mouse embryo E15

Reference:
Not provided

Repositories


BCBC members may [Login](#) to request this resource.

BCBC members may [Login](#) to request this resource.


Contact Information**Preferred Contact**

Name	Michael Ray
Institution	Vanderbilt University
Phone	(615)343-8258
Email	michael.ray@vanderbilt.edu

Access Status

 This resource is publicly viewable.

Request this Resource

 Request from a repository

Primary contributor: [Antibody Core](#)


(Retired)

Co-contributed by:

- [Antibody Core \(USA\)](#)

Resource Tags

AbCore, antibody, ghrelin, Human, Polyclonal

 Login to edit tags

 Read more about tags

Resource History & Actions

Approved on
Last modified on May 22, 2012

 Login to edit or request an edit

Related resources**BCBC**

No matching resources

Other Consortia

No matching resources

Data courtesy of [dkCOIN](#). Only public resources are displayed.


Associated Publications

Publication	Citation
-------------	----------

12874966	Espelund U, Hansen TK, Ørskov H, Frystyk J Assessment of ghrelin . (2003) <i>APMIS Suppl</i> : 140-5 (Added July 30, 2010)
--------------------------	---

Comments

There are no comments for this entry.

 Login to add
comments

[Home](#) · [Your Account](#) · [News & Events](#) · [Resources](#) · [Policies & Guidelines](#) · [About Us](#) · [FAQ](#) · [Site Map](#)

© 2002-2015 Beta Cell Biology Consortium - All Rights Reserved. [Terms of usage and disclaimer](#).

