

## My Account

Login  
Create Account

## Resources

View All (813)  
Adenoviruses (137)  
Antibodies (175)  
Bioimages (67)  
Genomics Studies (145)  
mESC Lines (68)  
Mouse Strains (120)  
Miscellaneous (46)  
Protocols (55)  
Research Data (4)  
Resource Tags (389)  
Visualization (9)

## Research &amp; Cores

Core Facilities (5)  
Research Highlights (5)  
Research Networks  
Research Objectives

## Information

About the BCBC  
BCBC Events  
Branding & Logos  
Career Opportunities  
Health  
NIH hESC Registry  
Policies & Guidelines  
Member Publications  
Research Programs  
Research Investigators  
Member Directory  
Tutorials

## Polyclonal Mouse PDX1 raised in Guinea Pig - Antibody RES313

### Antibody Information

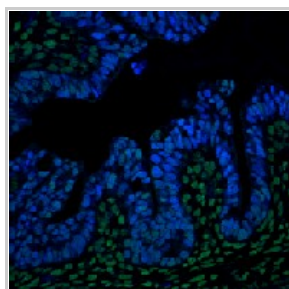
Antibody ID:	AB2028
Antigen:	PDX1 (NCBI Gene ID: <a href="#">18609</a> )
Type:	Polyclonal
Isotype:	Not Applicable
Immunogen Source:	Fusion Protein
Raised In:	Guinea Pig
Peptide:	GST-Pdx1(aa1-81)
Source of Antigen:	Mouse
Cross Reacts With:	Mouse
Affinity Purified:	Serum
Purity Details:	<i>Not provided</i>
Positive Control:	Mouse pancreas
Notes:	This antibody was donated by Professor Chris Wright, Vanderbilt University

### Applications and Uses

Application	Concentration	Storage Buffer	Protocols and Description
IHC-AIP	1:10.000	<i>Not provided</i>	Description: May also be used without application at 1:1000 dilution Protocols: 1. <a href="#">GP a-pdx IHC protocol</a>

### Associated Images

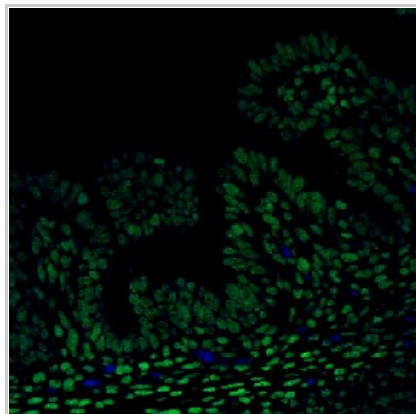
## Image 1



**Description:**  
Staining of E16.5 Pdx1 wild-type mouse pancreas

**Reference:**  
*Not provided*


## Image 2




**Description:**  
Staining of E16.5 Pdx1 null mouse pancreas

**Reference:**  
*Not provided*

### Access Status

 This resource is publicly viewable.

### Request this Resource

 Request from a repository

Primary contributor: [Antibody Core](#)


(Retired)


Co-contributed by:

- [Antibody Core \(USA\)](#)

### Resource Tags

AbCore, antibody, Mouse, PDX1, Polyclonal

 Login to edit tags

 Read more about tags

### Resource History & Actions

Approved on  
Last modified on Nov 09, 2010

 Login to edit or request an edit

### Related resources

#### BCBC

*No matching resources*

#### Other Consortia

*No matching resources*

Data courtesy of [dkCOIN](#). Only public resources are displayed.

## Repositories

BCBC members may [Login](#) to request this resource.

BCBC members may [Login](#) to request this resource.

## Contact Information

### Preferred Contact

<b>Name</b>	Michael Ray
<b>Institution</b>	Vanderbilt University
<b>Phone</b>	(615)343-8258
<b>Email</b>	<a href="mailto:michael.ray@vanderbilt.edu">michael.ray@vanderbilt.edu</a>

## Associated Publications


### Publication Citation

[14706336](#) Hingorani SR, Petricoin EF, Maitra A, Rajapakse V, King C, Jacobetz MA, Ross S, Conrads TP, Veenstra TD, Hitt BA, Kawaguchi Y, Johann D, Liotta LA, Crawford HC, Putt ME, Jacks T, Wright CV, Hruban RH, Lowy AM, Tuveson DA [Preinvasive and invasive ductal pancreatic cancer and its early detection in the mouse](#). (2003) *Cancer Cell* 4: 437-50 (Added March 18, 2009)

[14657333](#) Murtaugh LC, Stanger BZ, Kwan KM, Melton DANotch [signaling controls multiple steps of pancreatic differentiation](#). (2003) *Proc Natl Acad Sci U S A* 100: 14920-5 (Added January 04, 2010)

## Comments

There are no comments for this entry.

 [Login to add comments](#)

[Home](#) · [Your Account](#) · [News & Events](#) · [Resources](#) · [Policies & Guidelines](#) · [About Us](#) · [FAQ](#) · [Site Map](#)

© 2002-2015 Beta Cell Biology Consortium - All Rights Reserved. [Terms of usage and disclaimer](#).

