

My Account

[Login](#)
[Create Account](#)

Resources

[View All \(813\)](#)
[Adenoviruses \(137\)](#)
[Antibodies \(175\)](#)
[Bioimages \(67\)](#)
[Genomics Studies \(145\)](#)
[mESC Lines \(68\)](#)
[Mouse Strains \(120\)](#)
[Miscellaneous \(46\)](#)
[Protocols \(55\)](#)
[Research Data \(4\)](#)
[Resource Tags \(389\)](#)
[Visualization \(9\)](#)

Research & Cores

[Core Facilities \(5\)](#)
[Research Highlights \(5\)](#)
[Research Networks](#)
[Research Objectives](#)

Information

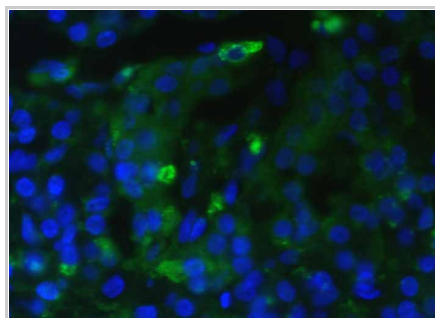
[About the BCBC](#)
[BCBC Events](#)
[Branding & Logos](#)
[Career Opportunities](#)
[Health](#)
[NIH hESC Registry](#)
[Policies & Guidelines](#)
[Member Publications](#)
[Research Programs](#)
[Research Investigators](#)
[Member Directory](#)
[Tutorials](#)

Monoclonal Rat Islet Delta Cells raised in Rat - Antibody RES299**Antibody Information**

Antibody ID:	AB2007
Antigen:	Islet Delta Cells (<i>No Gene ID associated</i>)
Type:	Monoclonal
Isotype:	IgM
Immunogen Source:	Autoantibodies from Diabetic BB Rat
Raised In:	Rat
Peptide:	<i>Not provided</i>
Source of Antigen:	Rat
Cross Reacts With:	Mouse, Human
Affinity Purified:	Supernatant
Purity Details:	<i>Not provided</i>
Positive Control:	Adult Rat Pancreas
Notes:	<i>Not provided</i>

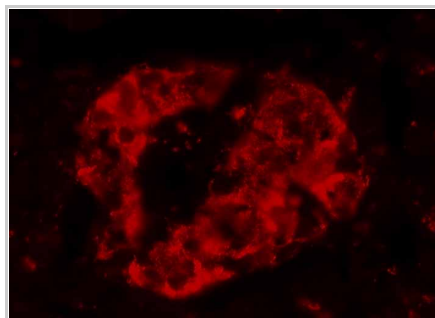
Applications and Uses

Application	Concentration	Storage Buffer	Protocols and Description
IHC-AIFr	Undiluted	RPMI with 0.05% Sodium Azide	Description: Fixation by formalin Protocols: 1. Fluorescent IHC staining of fixed frozen sections

Associated Images**Image 1**

Description:
Formalin frozen human pancreas stained with CA812/green and DAPI/blue

Reference:
Not provided

Image 2


Description:
Not provided

Reference:
Not provided


Repositories

No repositories indicated.

Contact Information**Access Status**

 This resource is publicly viewable.


Request this Resource


 Request from a repository

Primary contributor: [Antibody Core \(Retired\)](#)
 Co-contributed by:
 • [Antibody Core \(USA\)](#)

Resource Tags

AbCore, antibody, Islet Delta Cells, Monoclonal, Rat

 Login to edit tags

 Read more about tags

Resource History & Actions

Approved on
 Last modified on Nov 05, 2010

 Login to edit or request an edit

Related resources**BCBC**

No matching resources

Other Consortia

No matching resources

Data courtesy of [dkCOIN](#). Only public resources are displayed.

Preferred Contact

Name	Developmental Studies Hybridoma Bank
Institution	<i>Not provided</i>
Phone	319-335-3826
Email	dshb@uiowa.edu

Associated Publications

Publication	Citation
2122446	Contreas G, Jørgensen J, Madsen OD <u>Novel islet, duct, and acinar cell markers defined by monoclonal autoantibodies from prediabetic BB rats.</u> (1990) <i>Pancreas</i> 5: 540-7 (Added August 18, 2010)

Comments

There are no comments for this entry.

 [Login to add comments](#)

[Home](#) · [Your Account](#) · [News & Events](#) · [Resources](#) · [Policies & Guidelines](#) · [About Us](#) · [FAQ](#) · [Site Map](#)

© 2002-2015 Beta Cell Biology Consortium - All Rights Reserved. [Terms of usage and disclaimer.](#)

