

My Account

[Login](#)
[Create Account](#)

Resources

[View All \(813\)](#)
[Adenoviruses \(137\)](#)
[Antibodies \(175\)](#)
[Bioimages \(67\)](#)
[Genomics Studies \(145\)](#)
[mESC Lines \(68\)](#)
[Mouse Strains \(120\)](#)
[Miscellaneous \(46\)](#)
[Protocols \(55\)](#)
[Research Data \(4\)](#)
[Resource Tags \(389\)](#)
[Visualization \(9\)](#)

Research & Cores

[Core Facilities \(5\)](#)
[Research Highlights \(5\)](#)
[Research Networks](#)
[Research Objectives](#)

Information

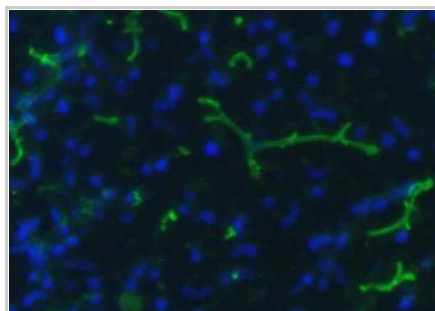
[About the BCBC](#)
[BCBC Events](#)
[Branding & Logos](#)
[Career Opportunities](#)
[Health](#)
[NIH hESC Registry](#)
[Policies & Guidelines](#)
[Member Publications](#)
[Research Programs](#)
[Research Investigators](#)
[Member Directory](#)
[Tutorials](#)

Monoclonal Rat Pancreatic Ducts raised in Mouse - Antibody RES297**Antibody Information**

Antibody ID:	AB2005
Antigen:	Pancreatic Ducts (<i>No Gene ID associated</i>)
Type:	Monoclonal
Isotype:	IgM
Immunogen Source:	MSL-cl.3 cells
Raised In:	Mouse
Peptide:	<i>Not provided</i>
Source of Antigen:	Rat
Cross Reacts With:	Mouse,Rat
Affinity Purified:	Supernatant
Purity Details:	<i>Not provided</i>
Positive Control:	Rat Pancreas
Notes:	<i>Not provided</i>

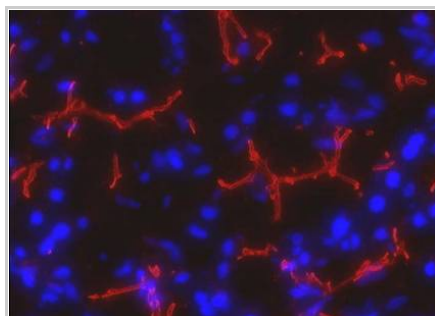
Applications and Uses

Application	Concentration	Storage Buffer	Protocols and Description
IHC-Fr	1:50 dilution	RPMI 0.05% Sodium Azide	Description: <i>Not provided</i> Protocols: <ol style="list-style-type: none"> Fluorescent IHC staining of unfixed frozen tissue

Associated Images**Image 1**

Description:
Unfixed frozen rat pancreas stained with B4-B3/Cy2 green and DAPI/blue

Reference:
Not provided

Image 2


Description:
Unfixed frozen rat pancreas stained with B4-B3/Alexa red and DAPI/blue

Reference:
Not provided

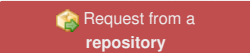
Repositories

BCBC members may [Login](#) to request this resource.

Access Status

 This resource is publicly viewable.

Request this Resource


 Request from a repository


Primary contributor: [Antibody Core \(Retired\)](#)
 Co-contributed by:

- [Antibody Core \(USA\)](#)

Resource Tags

AbCore, antibody, Monoclonal, Pancreatic Ducts, Rat

 Login to edit tags

 Read more about tags

Resource History & Actions

Approved on
Last modified on Nov 05, 2010

 Login to edit or request an edit

Related resources**BCBC**

No matching resources

Other Consortia

No matching resources

Data courtesy of [dkCOIN](#). Only public resources are displayed.

Contact Information

Preferred Contact

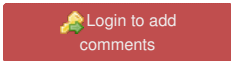
Name	Ole Madsen
Institution	Hagedorn Research Institute
Phone	+45 4443 9197
Email	odm@hagedorn.dk

Associated Publications

Publication	Citation
2550269	Beck TC, Madsen OD Monoclonal antibodies as probes to the differentiated exocrine pancreas react to monoclonal islet tumor tissue. (1989) <i>Exp Clin Endocrinol</i> 93 : 255-60 (Added August 18, 2010)

Comments

There are no comments for this entry.



[Home](#) · [Your Account](#) · [News & Events](#) · [Resources](#) · [Policies & Guidelines](#) · [About Us](#) · [FAQ](#) · [Site Map](#)

© 2002-2015 Beta Cell Biology Consortium - All Rights Reserved. [Terms of usage and disclaimer.](#)

