

My Account

[Login](#)
[Create Account](#)

Resources

[View All \(813\)](#)
[Adenoviruses \(137\)](#)
[Antibodies \(175\)](#)
[Bioimages \(67\)](#)
[Genomics Studies \(145\)](#)
[mESC Lines \(68\)](#)
[Mouse Strains \(120\)](#)
[Miscellaneous \(46\)](#)
[Protocols \(55\)](#)
[Research Data \(4\)](#)
[Resource Tags \(389\)](#)
[Visualization \(9\)](#)

Research & Cores

[Core Facilities \(5\)](#)
[Research Highlights \(5\)](#)
[Research Networks](#)
[Research Objectives](#)

Information

[About the BCBC](#)
[BCBC Events](#)
[Branding & Logos](#)
[Career Opportunities](#)
[Health](#)
[NIH hESC Registry](#)
[Policies & Guidelines](#)
[Member Publications](#)
[Research Programs](#)
[Research Investigators](#)
[Member Directory](#)
[Tutorials](#)

Polyclonal Mouse PDX1 raised in Chicken - Antibody RES294**Antibody Information**

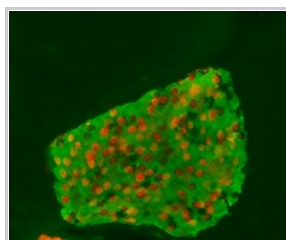
Antibody ID:	AB1983
Antigen:	PDX1 (NCBI Gene ID: 18609)
Type:	Polyclonal
Isotype:	Not Applicable
Immunogen Source:	Fusion Protein
Raised In:	Chicken
Peptide:	GST-PDX1 (aa205-aa284)
Source of Antigen:	Mouse
Cross Reacts With:	Mouse
Affinity Purified:	Purified
Purity Details:	IgY
Positive Control:	Mouse pancreas
Notes:	Donated by Dr. M. German, UCSF

Applications and Uses

Application	Concentration	Storage Buffer	Protocols and Description
IHC-P	1:500 - 1:1000	PBS (Ca/Mg free) with 0.1% Sodium Azide	Description: The dilutions are for use with Rabbit-anti Chicken Cy3 from Jackson as the secondary antibody Protocols: <ol style="list-style-type: none"> Immunofluorescence Protocol for Paraffin Sections

Associated Images

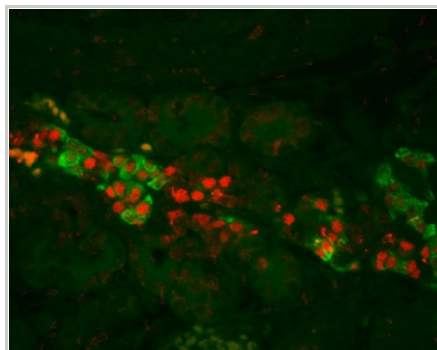
Image 1



Description:
Not provided

Reference:
Not provided

Image 2



Description:
Not provided


Reference:
Not provided

Repositories


BCBC members may [Login](#) to request this resource.

BCBC members may [Login](#) to request this resource.

Access Status

 This resource is publicly viewable.

Request this Resource


 Request from a repository


Primary contributor: [Antibody Core \(Retired\)](#)
 Co-contributed by:

- [Antibody Core \(USA\)](#)

Resource Tags

AbCore, antibody, Mouse, PDX1, Polyclonal

 Login to edit tags

 Read more about tags

Resource History & Actions

Approved on
 Last modified on Nov 09, 2010

 Login to edit or request an edit

Related resources**BCBC**

No matching resources

Other Consortia

No matching resources

Data courtesy of [dkCOIN](#). Only public resources are displayed.

Contact Information

Preferred Contact

Name	Michael Ray
Institution	Vanderbilt University
Phone	(615)343-8258
Email	michael.ray@vanderbilt.edu

Associated Publications


No publications associated

Comments



03/29/2005 06:58 AM
[Inger Lund Pedersen](#)

For E14.5d mouse pancreas, IF (using the protocol available from the BCBC website); 1:800 dilution optimal. TSA not tested. Readily detects highly expressing cells; PDX1 not well detected over background in remaining precursor epithelium and in nascent acini.

 Login to add comments

[Home](#) · [Your Account](#) · [News & Events](#) · [Resources](#) · [Policies & Guidelines](#) · [About Us](#) · [FAQ](#) · [Site Map](#)

© 2002-2015 Beta Cell Biology Consortium - All Rights Reserved. [Terms of usage and disclaimer](#).

