

My Account

[Login](#)
[Create Account](#)

Resources

[View All \(813\)](#)
[Adenoviruses \(137\)](#)
[Antibodies \(175\)](#)
[Bioimages \(67\)](#)
[Genomics Studies \(145\)](#)
[mESC Lines \(68\)](#)
[Mouse Strains \(120\)](#)
[Miscellaneous \(46\)](#)
[Protocols \(55\)](#)
[Research Data \(4\)](#)
[Resource Tags \(389\)](#)
[Visualization \(9\)](#)

Research & Cores

[Core Facilities \(5\)](#)
[Research Highlights \(5\)](#)
[Research Networks](#)
[Research Objectives](#)

Information

[About the BCBC](#)
[BCBC Events](#)
[Branding & Logos](#)
[Career Opportunities](#)
[Health](#)
[NIH hESC Registry](#)
[Policies & Guidelines](#)
[Member Publications](#)
[Research Programs](#)
[Research Investigators](#)
[Member Directory](#)
[Tutorials](#)

Polyclonal Rat ghrelin raised in Rabbit - Antibody RES289**Antibody Information**

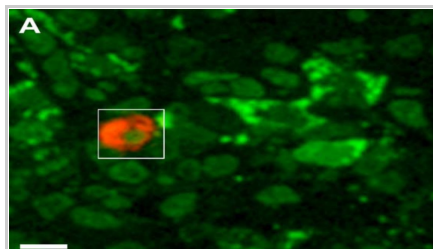
Antibody ID:	AB1701
Antigen:	ghrelin (NCBI Gene ID: 59301)
Type:	Polyclonal
Isotype:	Not Applicable
Immunogen Source:	Peptide
Raised In:	Rabbit
Peptide:	<i>Not provided</i>
Source of Antigen:	Rat
Cross Reacts With:	Mouse, Rat, Human
Affinity Purified:	Affinity Purified
Purity Details:	<i>Not provided</i>
Positive Control:	Rat stomach
Notes:	<i>Not provided</i>

Applications and Uses

Application	Concentration	Storage Buffer	Protocols and Description
IHC-P	1/400	Distilled water	Description: <i>Not provided</i> Protocols:

Associated Images

Image 1

**Description:**

Fluorescence photomicrograph of semi-thin section of human fetal pancreas, double-immunostained for ghrelin (red) and glucagon (green).

Reference:

15668796

Repositories**Phoenix Pharmaceuticals**

[Request via \[www.phoenixpeptide.com\]\(http://www.phoenixpeptide.com\) website](#)

Stock #: H-031-31

Availability Notes: *Not provided*


Contact Information**Preferred Contact**

Name	Phoenix Pharmaceuticals, Inc.
Institution	<i>Not provided</i>
Phone	(650) 558-8898
Email	info@phoenixpeptide.com

Associated Publications

Publication	Citation
15668796	Wierup N, Sundler F Ultrastructure of islet ghrelin cells in the human fetus. (2005) <i>Cell Tissue Res</i> 319: 423-8 (Added May 13, 2013)

Access Status

 This resource is publicly viewable.

Request this Resource

[Request from a repository](#)

Primary contributor: [Antibody Core](#) (**Retired**)

Co-contributed by:

- [Antibody Core \(USA\)](#)

Resource Tags

antibody, ghrelin, Polyclonal, Rat

[Login to edit tags](#)

[Read more about tags](#)

Resource History & Actions

Approved on

Last modified on May 07, 2013

[Login to edit or request an edit](#)

Related resources**BCBC**

No matching resources

Other Consortia

No matching resources


Data courtesy of [dkCOIN](#). Only public resources are displayed.

Comments



09/25/2003 04:32 PM
[Bertrand Blondeau](#)

This antibody works fine with IF but has not been tested for IHC.

 Login to add comments

[Home](#) · [Your Account](#) · [News & Events](#) · [Resources](#) · [Policies & Guidelines](#) · [About Us](#) · [FAQ](#) · [Site Map](#)

© 2002-2015 Beta Cell Biology Consortium - All Rights Reserved. [Terms of usage and disclaimer](#).

