

**My Account**

[Login](#)  
[Create Account](#)

**Resources**

[View All \(813\)](#)  
[Adenoviruses \(137\)](#)  
[Antibodies \(175\)](#)  
[Bioimages \(67\)](#)  
[Genomics Studies \(145\)](#)  
[mESC Lines \(68\)](#)  
[Mouse Strains \(120\)](#)  
[Miscellaneous \(46\)](#)  
[Protocols \(55\)](#)  
[Research Data \(4\)](#)  
[Resource Tags \(389\)](#)  
[Visualization \(9\)](#)

**Research & Cores**

[Core Facilities \(5\)](#)  
[Research Highlights \(5\)](#)  
[Research Networks](#)  
[Research Objectives](#)

**Information**

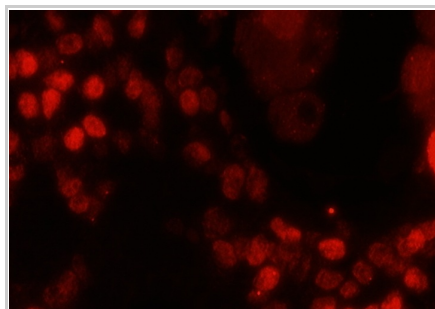
[About the BCBC](#)  
[BCBC Events](#)  
[Branding & Logos](#)  
[Career Opportunities](#)  
[Health](#)  
[NIH hESC Registry](#)  
[Policies & Guidelines](#)  
[Member Publications](#)  
[Research Programs](#)  
[Research Investigators](#)  
[Member Directory](#)  
[Tutorials](#)

**Polyclonal Mouse Pax6 raised in Rabbit - Antibody RES276****Antibody Information**

<b>Antibody ID:</b>	AB1642
<b>Antigen:</b>	Pax6 (NCBI Gene ID: <a href="#">18508</a> )
<b>Type:</b>	Polyclonal
<b>Isotype:</b>	Not Applicable
<b>Immunogen Source:</b>	Peptide
<b>Raised In:</b>	Rabbit
<b>Peptide:</b>	QVPGSEPMSQYWPRLQ
<b>Source of Antigen:</b>	Mouse
<b>Cross Reacts With:</b>	Mouse, Rat, Human
<b>Affinity Purified:</b>	Purified
<b>Purity Details:</b>	Tris buffered BSA
<b>Positive Control:</b>	Embryonic mouse pancreas
<b>Notes:</b>	Works best with microwave treatment. We have observed batch to batch differences from this company.

**Applications and Uses**

Application	Concentration	Storage Buffer	Protocols and Description
IHC-Fr	1:400	PBS	Description: <i>Not provided</i> Protocols: 1. <a href="#">Fluorescence</a>
IHC-P	1:2000 TSA	PBS-TNB	Description: <i>Not provided</i> Protocols: 1. <a href="#">TSA Protocol</a>

**Associated Images****Image 1**

**Description:**  
Embryonic E18 pancreas at 400x magnification. Visualized with donkey anti-rabbit Cy3.

**Reference:**  
*Not provided*

**Repositories****CRP Inc.**

[Request via www.crpinc.com website](#)

**Stock #:** PRB-278P  
**Availability Notes:** 0.1ml size


**Contact Information**

*Not provided*


**Associated Publications**

*No publications associated*

**Access Status**

 This resource is publicly viewable.

**Request this Resource**

 Request from a repository


Primary contributor: [Antibody Core \(Retired\)](#)  
 Co-contributed by:  

- [Antibody Core \(USA\)](#)

**Resource Tags**


antibody, Mouse, Pax6, pax6, Polyclonal

 Login to edit tags

 Read more about tags

**Resource History & Actions**

Approved on  
 Last modified on Sep 22, 2003

 Login to edit or request an edit

**Related resources****BCBC**

*No matching resources*


**Other Consortia**

*No matching resources*

Data courtesy of [dkCOIN](#). Only public resources are displayed.

## Comments

*There are no comments for this entry.*

 Login to add  
comments

[Home](#) · [Your Account](#) · [News & Events](#) · [Resources](#) · [Policies & Guidelines](#) · [About Us](#) · [FAQ](#) · [Site Map](#)

© 2002-2015 Beta Cell Biology Consortium - All Rights Reserved. [Terms of usage and disclaimer.](#)

