

**My Account**

[Login](#)  
[Create Account](#)

**Resources**

[View All \(813\)](#)  
[Adenoviruses \(137\)](#)  
[Antibodies \(175\)](#)  
[Bioimages \(67\)](#)  
[Genomics Studies \(145\)](#)  
[mESC Lines \(68\)](#)  
[Mouse Strains \(120\)](#)  
[Miscellaneous \(46\)](#)  
[Protocols \(55\)](#)  
[Research Data \(4\)](#)  
[Resource Tags \(389\)](#)  
[Visualization \(9\)](#)

**Research & Cores**

[Core Facilities \(5\)](#)  
[Research Highlights \(5\)](#)  
[Research Networks](#)  
[Research Objectives](#)

**Information**

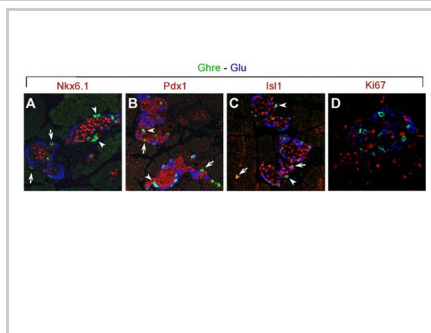
[About the BCBC](#)  
[BCBC Events](#)  
[Branding & Logos](#)  
[Career Opportunities](#)  
[Health](#)  
[NIH hESC Registry](#)  
[Policies & Guidelines](#)  
[Member Publications](#)  
[Research Programs](#)  
[Research Investigators](#)  
[Member Directory](#)  
[Tutorials](#)

**Polyclonal Human ghrelin raised in Goat - Antibody RES275****Antibody Information**

Antibody ID:	AB1641
Antigen:	ghrelin (NCBI Gene ID: <a href="#">51738</a> )
Type:	Polyclonal
Isotype:	Not Applicable
Immunogen Source:	Peptide
Raised In:	Goat
Peptide:	<i>Not provided</i>
Source of Antigen:	Human
Cross Reacts With:	Mouse,Rat,Human
Affinity Purified:	Serum
Purity Details:	<i>Not provided</i>
Positive Control:	stomach tissue
Notes:	<i>Not provided</i>

**Applications and Uses**

Application	Concentration	Storage Buffer	Protocols and Description
IHC-P	1:500	PBS	Description: <i>Not provided</i> Protocols: 1. <a href="#">Fluorescence</a>


**Associated Images****Image 1****Description:**

Expression of ghrelin in e19 mouse islets.

**Reference:**

16122727

**Repositories****Santa Cruz Biotechnology**


 Request via [www.scbt.com](http://www.scbt.com)  
website

**Stock #:** SC-10368  
**Availability Notes:** *Not provided*


**Contact Information****Preferred Contact**

Name	Santa Cruz Biotechnology, Inc.
Institution	<i>Not provided</i>
Phone	214-902-3900
Email	<a href="mailto:scbt@scbt.com">scbt@scbt.com</a>

**Associated Publications****Access Status**

 This resource is publicly viewable.

**Request this Resource**

 Request from a  
repository

Primary contributor: [Antibody Core](#)

(Retired)

Co-contributed by:

- [Antibody Core \(USA\)](#)

**Resource Tags**

antibody, ghrelin, Human, IHC, Polyclonal

 Login to edit tags

 Read more about tags

**Resource History & Actions**

Approved on  
 Last modified on Oct 30, 2012

 Login to edit or request an edit

**Related resources****BCBC**

*No matching resources*

**Other Consortia**

*No matching resources*

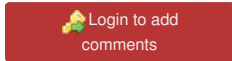
Data courtesy of [dkCOIN](#). Only public resources are displayed.

**Publication Citation**

[16122727](#) Heller RS, Jenny M, Collombat P, Mansouri A, Tomasetto C, Madsen OD, Mellitzer G, Gradwohl G, Serup P [Genetic determinants of pancreatic epsilon-cell development](#). (2005) *Dev Biol* **286**: 217-24 (Added October 30, 2012)

**Comments**

There is one comment awaiting approval.



[Home](#) · [Your Account](#) · [News & Events](#) · [Resources](#) · [Policies & Guidelines](#) · [About Us](#) · [FAQ](#) · [Site Map](#)

© 2002-2015 Beta Cell Biology Consortium - All Rights Reserved. [Terms of usage and disclaimer](#).

