

My Account

Login
Create Account

Resources

View All (813)
Adenoviruses (137)
Antibodies (175)
Bioimages (67)
Genomics Studies (145)
mESC Lines (68)
Mouse Strains (120)
Miscellaneous (46)
Protocols (55)
Research Data (4)
Resource Tags (389)
Visualization (9)

Research & Cores

Core Facilities (5)
Research Highlights (5)
Research Networks
Research Objectives

Information

About the BCBC
BCBC Events
Branding & Logos
Career Opportunities
Health
NIH hESC Registry
Policies & Guidelines
Member Publications
Research Programs
Research Investigators
Member Directory
Tutorials

Polyclonal Rat C-peptide 1 raised in Rabbit - Antibody RES268

Antibody Information

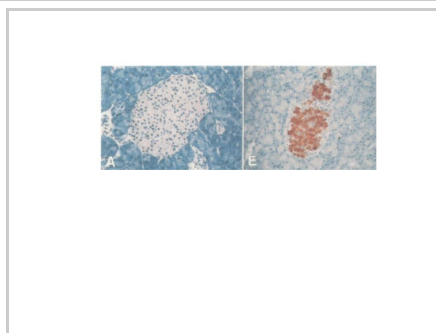
Antibody ID:	AB1043
Antigen:	C-peptide 1 (NCBI Gene ID: 24505)
Type:	Polyclonal
Isotype:	Not Applicable
Immunogen Source:	Peptide
Raised In:	Rabbit
Peptide:	rat C-peptide 1 (aa5-aa21)
Source of Antigen:	Rat
Cross Reacts With:	Rat
Affinity Purified:	Serum
Purity Details:	<i>Not provided</i>
Positive Control:	Adult Rat pancreas
Notes:	This antiserum is uniquely specific for rat C-peptide 1 and neither cross-reacts to mouse C-peptide 1 nor to rat/mouse C-peptide 2

Applications and Uses

Application	Concentration	Storage Buffer	Protocols and Description
IHC	1:2000	PBS	Description: <i>Not provided</i> Protocols: 1. Peroxidase

Associated Images

Image 1



Description:
Indirect immunoperoxidase with rat C peptide 1 antiserum (#666) on mouse (A) and rat (E)pancreatic sections.

Reference:
Not provided

Repositories

BCBC members may [Login](#) to request this resource.

BCBC members may [Login](#) to request this resource.


Contact Information

Preferred Contact


Name	Michael Ray
Institution	Vanderbilt University
Phone	(615)343-8258
Email	michael.ray@vanderbilt.edu

Associated Publications

Access Status

 This resource is publicly viewable.

Request this Resource


 Request from a repository

Primary contributor: [Antibody Core \(Retired\)](#)
Co-contributed by:
• [Antibody Core \(USA\)](#)

Resource Tags

AbCore, antibody, C-peptide 1, Polyclonal, Rat

 Login to edit tags

 Read more about tags

Resource History & Actions

Approved on
Last modified on Jun 26, 2015

 Login to edit or request an edit

Related resources

BCBC

No matching resources

Other Consortia

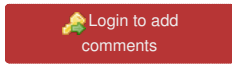
No matching resources

Data courtesy of [dkCOIN](#). Only public resources are displayed.

Publication	Citation
1569972	Blume N, Petersen JS, Andersen LC, Kofod H, Dyrberg T, Michelsen BK, Serup P, Madsen OD Immature transformed rat islet beta-cells differentially express C-peptides derived from the genes coding for insulin I and II as well as a transfected human insulin gene. (1992) <i>Mol Endocrinol</i> 6 : 299-307 (Added August 18, 2010)

Comments

There are no comments for this entry.



[Home](#) · [Your Account](#) · [News & Events](#) · [Resources](#) · [Policies & Guidelines](#) · [About Us](#) · [FAQ](#) · [Site Map](#)

© 2002-2015 Beta Cell Biology Consortium - All Rights Reserved. [Terms of usage and disclaimer.](#)

