

My Account

Login
Create Account

Resources

View All (813)
Adenoviruses (137)
Antibodies (175)
Bioimages (67)
Genomics Studies (145)
mESC Lines (68)
Mouse Strains (120)
Miscellaneous (46)
Protocols (55)
Research Data (4)
Resource Tags (389)
Visualization (9)

Research & Cores

Core Facilities (5)
Research Highlights (5)
Research Networks
Research Objectives

Information

About the BCBC
BCBC Events
Branding & Logos
Career Opportunities
Health
NIH hESC Registry
Policies & Guidelines
Member Publications
Research Programs
Research Investigators
Member Directory
Tutorials

ROSA^{loxP-STOP-LoxP-Myt1} - Mouse Strain RES238**Mouse Information**

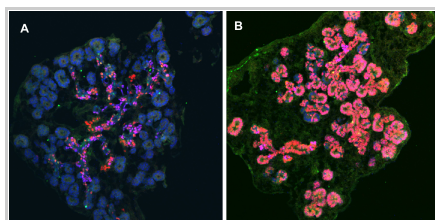
Common Name:	ROSA ^{loxP-STOP-LoxP-Myt1}
MGI Official Name:	Gt(ROSA)26Sor ^{tm1(Myt1⁺)Hri}
Description:	Targeted insertion of a LoxP-STOP-LoxP-Myt1 cassette into the ROSA26 locus. The presence of Cre recombinase will lead to activation of the 7 zinc finger isoform of Myt1.
Categories:	Cre-lox inducible

Genetic Alterations

1) Targeted Mutagenesis	
Type of Allele	Conditional Activating
Targeted Gene	ROSA26 (Gt(ROSA)26Sor - NCBI GeneID:14910)
Targeted Allele	ROSA26-loxp-STOP-loxp-Myt1 (Not yet available)
Description of Targeting Vector	The loxp-stop-loxp-Myt1 was cloned into the Pac1 Asc1 sites of the pROSA26PA vector from philippe soriano.
Targeting Vector Genbank File	pROSAIG-Myc_MyT1-7zf.gb
Citations	Not Available

Strain Information

Strain Type:	Mixed
Chimera/Founder Genetic Background:	129
Current Genetic Background:	CD-1 (date recorded: 03/27/2015)
Strain Description:	Not provided

Associated Images**Image 1**

Description:
Expression of Myt1 in wt (A) and ROSA-Myt1 crossed to Pdx1-Cre at e16. Myt1 (red), Pdx1 (blue) and Ngn3 (green)

Reference:
Not provided


Repositories

No repositories indicated.


Contact Information

Preferred Contact	
Name	Palle Serup
Institution	University of Copenhagen
Phone	+45 35 33 51 95
Email	palle.serup@sund.ku.dk
Primary Lab Contact	
Name	Jacob Hecksher-Sorensen

Access Status

 This resource is publicly viewable.

Request this Resource

 Request from a repository

Primary contributor: [Palle Serup](#)

Resource Tags


Gt(ROSA)26Sor^{tm1(Myt1⁺)Hri}, mouse, mouse strain, Myt1, Rosa, Rosa26, ROSA^{loxP-STOP-LoxP-Myt1}

 Login to edit tags

 Read more about tags

Resource History & Actions

Approved on Jun 19, 2008
Last modified on Mar 24, 2015

 Login to edit or request an edit

Related resources**BCBC**

No matching resources

Other Consortia

No matching resources

Data courtesy of [dkCOIN](#). Only public resources are displayed.

Institution	Hagedorn Research Institute
Phone	+45 3075 9196
Email	jhes@hagedorn.dk

Associated Publications

No publications associated

Comments

There are no comments for this entry.

