

My Account

[Login](#)
[Create Account](#)

Resources

[View All \(813\)](#)
[Adenoviruses \(137\)](#)
[Antibodies \(175\)](#)
[Bioimages \(67\)](#)
[Genomics Studies \(145\)](#)
[mESC Lines \(68\)](#)
[Mouse Strains \(120\)](#)
[Miscellaneous \(46\)](#)
[Protocols \(55\)](#)
[Research Data \(4\)](#)
[Resource Tags \(389\)](#)
[Visualization \(9\)](#)

Research & Cores

[Core Facilities \(5\)](#)
[Research Highlights \(5\)](#)
[Research Networks](#)
[Research Objectives](#)

Information

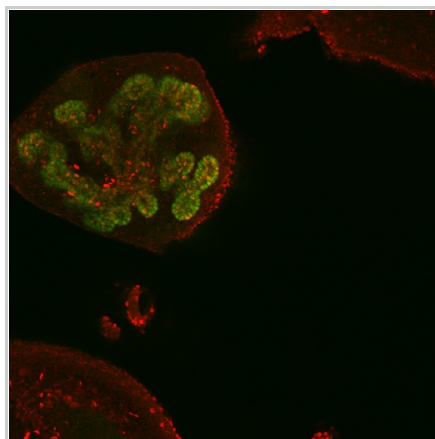
[About the BCBC](#)
[BCBC Events](#)
[Branding & Logos](#)
[Career Opportunities](#)
[Health](#)
[NIH hESC Registry](#)
[Policies & Guidelines](#)
[Member Publications](#)
[Research Programs](#)
[Research Investigators](#)
[Member Directory](#)
[Tutorials](#)

Polyclonal Human Cleaved Notch1 raised in Rabbit - Antibody RES1163**Antibody Information**

Antibody ID:	AB2555
Antigen:	Cleaved Notch1 (NCBI Gene ID: 4851)
Type:	Polyclonal
Isotype:	Not Applicable
Immunogen Source:	Peptide
Raised In:	Rabbit
Peptide:	peptide corresponding to sequence at Val1744 cleavage site
Source of Antigen:	Human
Cross Reacts With:	Mouse,Rat,Human
Affinity Purified:	Affinity Purified
Purity Details:	<i>Not provided</i>
Positive Control:	<i>Not provided</i>
Notes:	<i>Not provided</i>

Applications and Uses

Application	Concentration	Storage Buffer	Protocols and Description
IHC	<i>Not provided</i>	1:100	Description: Wholemout immunofluorescence as described in Ahnfelt-Ronne et al., 2007, J Histochem and cytochem: 55(9): 925-930. Notch staining requires Heating in a boiling waterbath in 10mM citrate buffer, pH6 for 1 hour. Performed after Dent????s bleach treatment in our standard protocol Protocols:


Associated Images**Image 1****Description:**

Wholemount immunofluorescence of mouse e13.5 (optical section). Rb anti cleaved Notch1 1:100 with Cy3 TSA costained with goat anti Pdx1 Cy2 green.


Reference:

Jonas Ahnfelt-Rønne, Hagedorn Research Institute

Access Status

 This resource is publicly viewable.

Request this Resource

 Request from a repository


Primary contributor: [Antibody Core \(Retired\)](#)

Co-contributed by:

- [Antibody Core \(USA\)](#)

Resource Tags

antibody, Cleaved Notch1, Human, Polyclonal

 Login to edit tags

 Read more about tags

Resource History & Actions

Approved on
Last modified on Mar 09, 2009

 Login to edit or request an edit

Related resources**BCBC**

No matching resources

Other Consortia

No matching resources

Data courtesy of [dkCOIN](#). Only public resources are displayed.

Repositories**Cell Signaling**

 Request via www.cellsignal.com website

Stock #: #2421

Availability Notes: *Not provided*

Contact Information

Preferred Contact

Name	Cell Signaling Technology
Institution	<i>Not provided</i>
Phone	978.867.2300
Email	sales@cellsignal.com

Associated Publications

Publication	Citation
22096075	Ahnfelt-Rønne J, Jørgensen MC, Klinck R, Jensen JN, Füchtbauer EM, Deering T, MacDonald RJ, Wright CV, Madsen OD, Serup P Ptf1a-mediated control of Dll1 reveals an alternative to the lateral inhibition mechanism. (2012) <i>Development</i> 139 : 33-45 (Added November 29, 2012)

Comments

There are no comments for this entry.

